

\$959,900 - 1159 Bennet Drive, Port Coquitlam

MLS® #R3057593

\$959,900

4 Bedroom, 3.00 Bathroom, 1,800 sqft
Single Family

N/A, Port Coquitlam, British Columbia

Welcome to The Summit, nestled in the highly sought-after Citadel neighborhood! This bright and spacious 4-bedroom, 3-bathroom townhome offers over 1,800 sq. ft. across three levels. The open-concept design features a maple kitchen with granite countertops and generous living areas ideal for entertaining. Soak in the breathtaking panoramic views of the mountains, river, and city skyline from multiple levels-truly a standout feature of this home. Located just minutes from major routes, shopping, restaurants, recreation, and schools. A must-see property in a prime location! (id:6289)

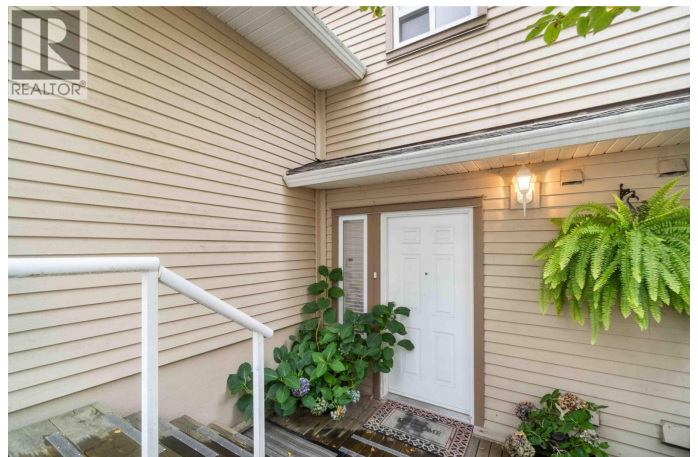
Built in 2007

Essential Information

Listing #	R3057593
Price	\$959,900
Bedrooms	4
Bathrooms	3.00
Square Footage	1,800
Year Built	2007
Type	Single Family
Sub-Type	Strata
Style	2 Level

Community Information

Address 1159 Bennet Drive



Subdivision	N/A
City	Port Coquitlam
Province	British Columbia
Postal Code	V3C6H2

Amenities

Amenities	Recreation, Shopping, Laundry - In Suite
Features	Central location
Parking Spaces	2
Parking	Garage
# of Garages	2
View	View

Interior

Interior Features	Drapes/Window coverings
Appliances	All
Heating	Electric Baseboard heaters, Hot Water
Has Basement	Yes
Basement	Unknown

Listing Details

Listing Office	Royal LePage Elite West
----------------	-------------------------



The trademarks MLS®, Multiple Listing Service® and the associated logos are owned by The Canadian Real Estate Association (CREA) and identify the quality of services provided by real estate professionals who are members of CREA. REALTOR®. Member of CREA and more.

Listing information last updated on October 14th, 2025 at 3:01pm PDT