

# \$1,200,000 - 35 35931 Empress Drive, Abbotsford

MLS® #R3057162

**\$1,200,000**

4 Bedroom, 3.00 Bathroom, 3,158 sqft

Single Family

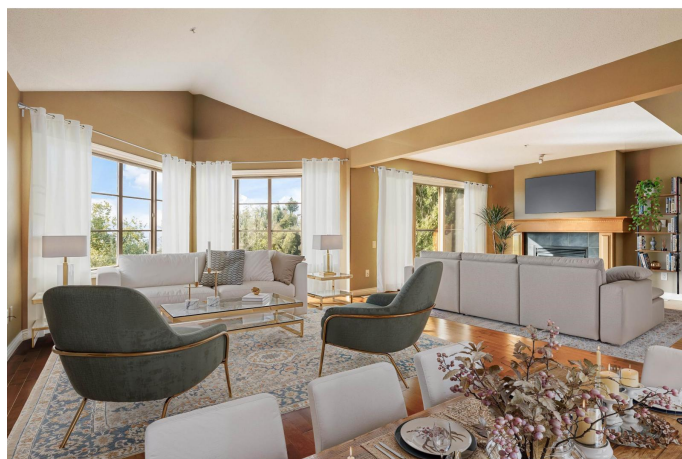
N/A, Abbotsford, British Columbia

Perched high above the valley in the highly sought-after gated community of Majestic Ridge, this luxurious townhouse offers breathtaking panoramic views & the space & comfort of a detached home. Privately positioned in the most secluded location within the complex, it offers peace, quiet, & a sense of retreat-along with a large driveway providing ample parking. Expansive windows & vaulted ceilings fill over 3,100 sqft w/natural light, creating an uplifting sense of openness & warmth. The beautifully appointed kitchen invites connection-whether you're entertaining friends or enjoying a quiet morning coffee w/the sunrise. Bask in the sun on your deck, surrounded by scenic beauty and serenity-a truly special opportunity in one of the area's most desirable locations. (id:6289)

Built in 2005

## Essential Information

Listing #	R3057162
Price	\$1,200,000
Bedrooms	4
Bathrooms	3.00
Square Footage	3,158
Year Built	2005
Type	Single Family
Sub-Type	Strata
Style	Ranch



## Community Information

Address	35 35931 Empress Drive
Subdivision	N/A
City	Abbotsford
Province	British Columbia
Postal Code	V3G2M8

## Amenities

Utilities	Electricity, Natural Gas, Water
Parking Spaces	5
Parking	Garage
# of Garages	1
View	Mountain view

## Interior

Appliances	Washer, Dryer, Refrigerator, Stove, Dishwasher
Heating	Natural gas Forced air
Fireplace	Yes
# of Fireplaces	1
Has Basement	Yes
Basement	Separate entrance

## Listing Details

Listing Office	Royal LePage Little Oak Realty
----------------	--------------------------------



The trademarks MLS®, Multiple Listing Service® and the associated logos are owned by The Canadian Real Estate Association (CREA) and identify the quality of services provided by real estate professionals who are members of CREA. REALTOR®. Member of CREA and more.

Listing information last updated on October 12th, 2025 at 5:31pm PDT