

\$1,194,900 - 35730 Timberlane Drive, Abbotsford

MLS® #R3056721

\$1,194,900

4 Bedroom, 4.00 Bathroom, 4,341 sqft

Single Family on 0.17 Acres

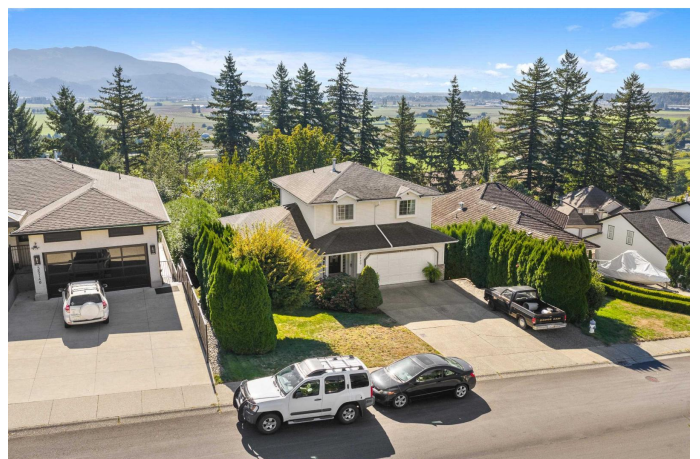
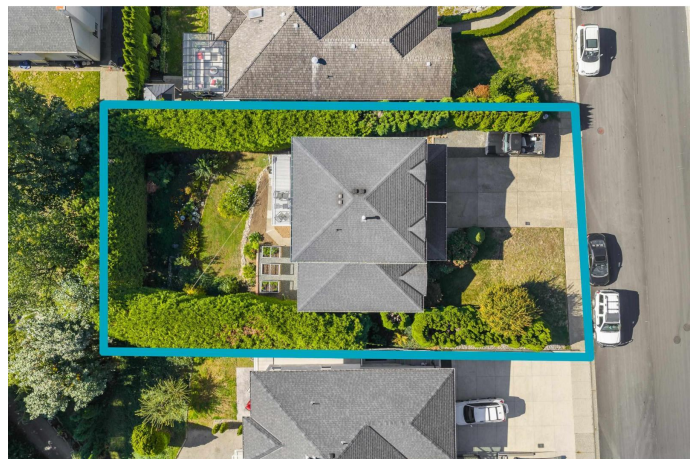
N/A, Abbotsford, British Columbia

Desirable East Abbotsford family home with basement SUITE, backyard with PRIVACY and SOUTHERN exposure, TWO balconies, large TRIPLE wide driveway and even some view of Sumas Prairie. ORIGINAL owner home and is move-in ready! Clean and maintained two storey plus basement home with space for the whole family including inlaws or rent out the one bedroom and den suite. You will appreciate the abundance of natural light! Main floor features formal living and dining areas plus kitchen, family room and powder room. Find three spacious bedrooms plus two baths above. Basement has large laundry/storage room plus access to suite (never rented). Nice suite layout with big bedroom, full kitchen, den, laundry/storage and covered balcony! Lots of parking with triple wide driveway. (id:6289)

Built in 1993

Essential Information

Listing #	R3056721
Price	\$1,194,900
Bedrooms	4
Bathrooms	4.00
Square Footage	4,341
Acres	0.17
Year Built	1993
Type	Single Family



Sub-Type	Freehold
Style	2 Level

Community Information

Address	35730 Timberlane Drive
Subdivision	N/A
City	Abbotsford
Province	British Columbia
Postal Code	V3G1G3

Amenities

Amenities	Laundry - In Suite, Storage - Locker
Utilities	Electricity, Natural Gas, Water
Parking Spaces	5
Parking	Garage, Open, RV
# of Garages	1

Interior

Appliances	Washer, Dryer, Refrigerator, Stove, Dishwasher
Heating	Natural gas Baseboard heaters, Forced air
Fireplace	Yes
# of Fireplaces	2
Has Basement	Yes
Basement	Unknown

Listing Details

Listing Office	Homelife Advantage Realty Ltd.
----------------	--------------------------------



The trademarks MLS®, Multiple Listing Service® and the associated logos are owned by The Canadian Real Estate Association (CREA) and identify the quality of services provided by real estate professionals who are members of CREA. REALTOR®. Member of CREA and more.

Listing information last updated on October 14th, 2025 at 3:16am PDT