

\$758,000 - 2409 3663 Crowley Drive, Vancouver

MLS® #R3055531

\$758,000

2 Bedroom, 2.00 Bathroom, 820 sqft

Single Family

N/A, Vancouver, British Columbia

Corner Sub-Penthouse unit with incredible views, built with quality by BOSA! Welcoming and spacious home featuring 2 beds and 2 baths with sweeping view of the water, mountains, and city from its NW facing windows. This well-designed home offers an abundance of natural light, modern finishes, and a highly efficient layout. Move-in ready. Located in a super convenient location just steps to Joyce Skytrain Station, shops, parks, and great local eats. Comes with 1 parking stall and 1 storage locker for your extras. A perfect place to call home sweet home. OPEN HOUSE SUN OCT 12, 1:30-3:30PM (id:6289)

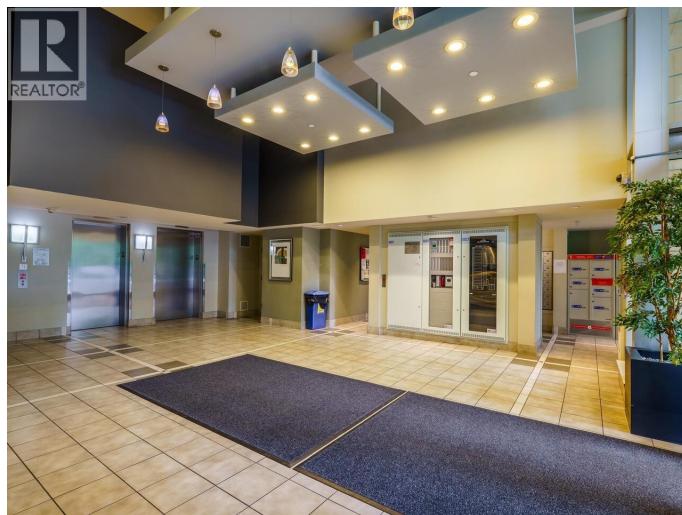
Built in 2005

Essential Information

Listings #	R3055531
Price	\$758,000
Bedrooms	2
Bathrooms	2.00
Square Footage	820
Year Built	2005
Type	Single Family
Sub-Type	Strata

Community Information

Address	2409 3663 Crowley Drive
Subdivision	N/A
City	Vancouver



Province	British Columbia
Postal Code	V5R6H4

Amenities

Amenities	Recreation, Shopping, Exercise Centre, Laundry - In Suite
Features	Central location, Private setting, Treed
Parking Spaces	1
Parking	Underground
View	View

Interior

Interior Features	Drapes/Window coverings
Appliances	All
Heating	Electric

Exterior

Exterior Features	Garden Area
-------------------	-------------

Listing Details

Listing Office	Royal Pacific Realty Corp.
----------------	----------------------------



The trademarks MLS®, Multiple Listing Service® and the associated logos are owned by The Canadian Real Estate Association (CREA) and identify the quality of services provided by real estate professionals who are members of CREA. REALTOR®. Member of CREA and more.

Listing information last updated on October 15th, 2025 at 11:31am PDT