

\$729,900 - 30 10038 155 Street, Surrey

MLS® #R3055004

\$729,900

3 Bedroom, 3.00 Bathroom, 1,455 sqft

Single Family

N/A, Surrey, British Columbia

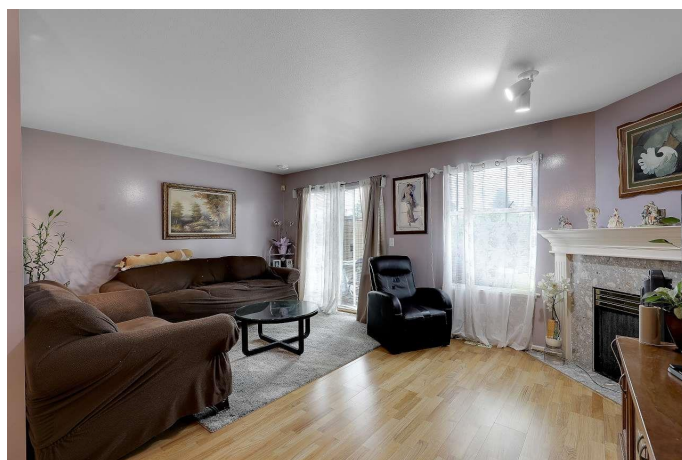
Very well-kept townhouse in the sought-after Spring Meadows complex, centrally located in Guildford and close to shopping, schools, parks, and transit. This 2-storey home features 3 spacious bedrooms, 2.5 bathrooms, a grand living and dining area, functional kitchen with breakfast nook, and a chair lift that can stay or be removed. The primary bedroom includes a walk-in closet and 4-piece ensuite. Enjoy the warmth of cedar-lined skylights and beautiful hardwood flooring throughout. The semi-private backyard includes a gas BBQ hook-up, perfect for entertaining. Includes an attached single-car garage, an additional parking space, and plenty of visitor parking. A well-maintained strata you don't want to miss! (id:6289)

Built in 1993

Essential Information

Listing #	R3055004
Price	\$729,900
Bedrooms	3
Bathrooms	3.00
Square Footage	1,455
Year Built	1993
Type	Single Family
Sub-Type	Strata
Style	2 Level

Community Information



Address	30 10038 155 Street
Subdivision	N/A
City	Surrey
Province	British Columbia
Postal Code	V3R0S2

Amenities

Utilities	Electricity, Water
Parking Spaces	2
Parking	Carport, Garage
# of Garages	2

Interior

Appliances	Washer, Dryer, Refrigerator, Stove, Dishwasher
Heating	Electric Baseboard heaters
Fireplace	Yes
# of Fireplaces	1
Basement	Unknown

Listing Details

Listing Office	RE/MAX Blueprint
----------------	------------------



The trademarks MLS®, Multiple Listing Service® and the associated logos are owned by The Canadian Real Estate Association (CREA) and identify the quality of services provided by real estate professionals who are members of CREA. REALTOR®. Member of CREA and more.

Listing information last updated on October 14th, 2025 at 7:47pm PDT