

# \$769,000 - 2205 938 Smithe Street, Vancouver

MLS® #R3054789

**\$769,000**

1 Bedroom, 1.00 Bathroom, 707 sqft

Single Family

N/A, Vancouver, British Columbia

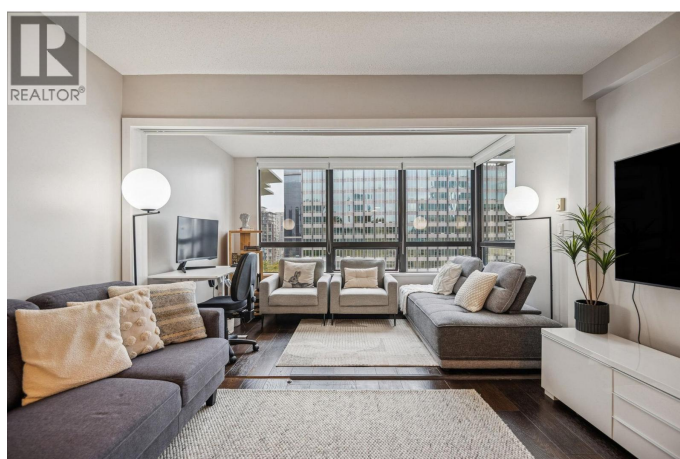
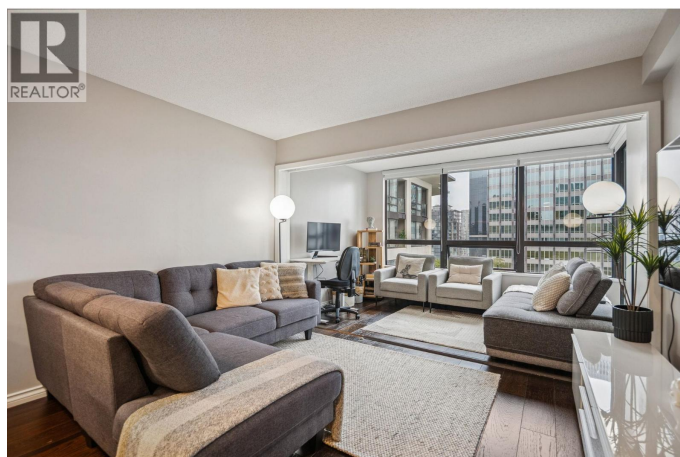
Stunning SUB PENTHOUSE at Electric Avenue! Rarely available, this FLEXIBLE FLOORPLAN can be used as a spacious 1 BDR/Den with flex, or converted to a cozy jr 2 br with den/office. Recently updated with new appliances, light fixtures, fresh paint, new blinds, balcony floors, and a glass shower door. Enjoy the best views of downtown from your patio or cozy up in your living room. Extremely central location, 2 min walk to restaurants, transit and shops. With top-notch amenities including a fully equipped gym, 24-hour Concierge, function/meeting & party rooms, theatre, and 2 rooftop outdoor spaces, this Bosa Building stands out. Whether you're a savvy investor or end user, this one is HARD TO BEAT. Open House Sat 2-4pm & Sun from 1:30-3:30pm. (id:6289)

Built in 2005

## Essential Information

Listing #	R3054789
Price	\$769,000
Bedrooms	1
Bathrooms	1.00
Square Footage	707
Year Built	2005
Type	Single Family
Sub-Type	Strata

## Community Information



Address	2205 938 Smithe Street
Subdivision	N/A
City	Vancouver
Province	British Columbia
Postal Code	V6Z0A4

### Amenities

Amenities	Recreation, Shopping, Laundry - In Suite
Features	Central location, Elevator, Gated community
Parking Spaces	1
Parking	Underground

### Interior

Heating	Electric
---------	----------

### Listing Details

Listing Office	Stilhavn Real Estate Services
----------------	-------------------------------



The trademarks MLS®, Multiple Listing Service® and the associated logos are owned by The Canadian Real Estate Association (CREA) and identify the quality of services provided by real estate professionals who are members of CREA. REALTOR®. Member of CREA and more.

Listing information last updated on October 14th, 2025 at 5:33am PDT