

\$755,000 - 210 1120 Tsatsu Shores Drive, Tsawwassen

MLS® #R3054094

\$755,000

1 Bedroom, 2.00 Bathroom, 907 sqft
Single Family

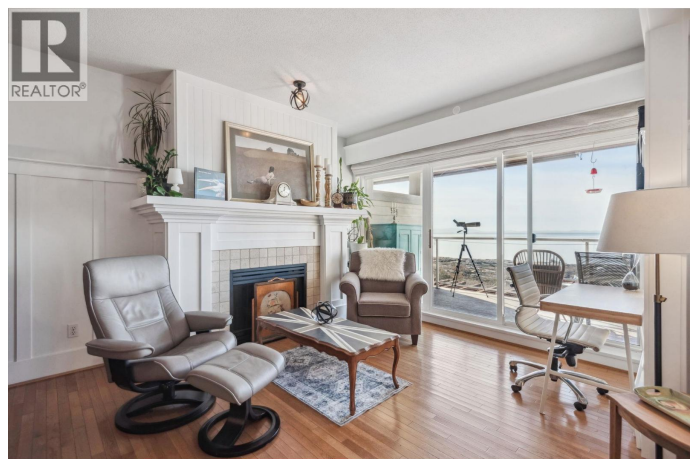
N/A, Tsawwassen, British Columbia

Quintessential WATERFRONT living at its finest at Tsawwassen's coveted TSATSU SHORES. This 2nd story 1 Bed, 2 Bath, 907 square ft oceanfront condo includes panoramic views of the Salish Sea, Gulf Islands and beyond. Tasteful updates throughout and a floor plan that was previously a 2 Bed & has been transformed into 1 Bedroom to allow for additional main living space to enjoy. Also features detailed millwork + wainscoting, hardwood flooring, gas fireplace & stainless steel appliances. The 182 square ft covered patio space is the ultimate in year round enjoyment and showcases some of the best views in Sunny Tsawwassen. Immersed in nature & conveniently located minutes to the Tsw Ferry Terminal, Tsw Mills Mall, Hwy 99 and Tsawwassen Town Center. (id:6289)

Built in 1996

Essential Information

Listing #	R3054094
Price	\$755,000
Bedrooms	1
Bathrooms	2.00
Square Footage	907
Year Built	1996
Type	Single Family
Sub-Type	Leasehold Condo/Strata



Community Information

Address	210 1120 Tsatsu Shores Drive
Subdivision	N/A
City	Tsawwassen
Province	British Columbia
Postal Code	V4M4G3

Amenities

Amenities	Golf Course, Marina, Recreation, Exercise Centre
Features	Private setting, Elevator
Parking Spaces	1
Parking	Underground
View	View
Is Waterfront	Yes
Waterfront	Waterfront

Interior

Appliances	All
Heating	Electric, Natural gas Baseboard heaters

Listing Details

Listing Office	Royal LePage Regency Realty
----------------	-----------------------------



The trademarks MLS®, Multiple Listing Service® and the associated logos are owned by The Canadian Real Estate Association (CREA) and identify the quality of services provided by real estate professionals who are members of CREA. REALTOR®. Member of CREA and more.

Listing information last updated on October 13th, 2025 at 3:17pm PDT