

\$1,549,900 - 11925 W Beverly Road, Prince George

MLS® #R3030501

\$1,549,900

5 Bedroom, 5.00 Bathroom,
Single Family on 5.75 Acres

N/A, Prince George, British Columbia

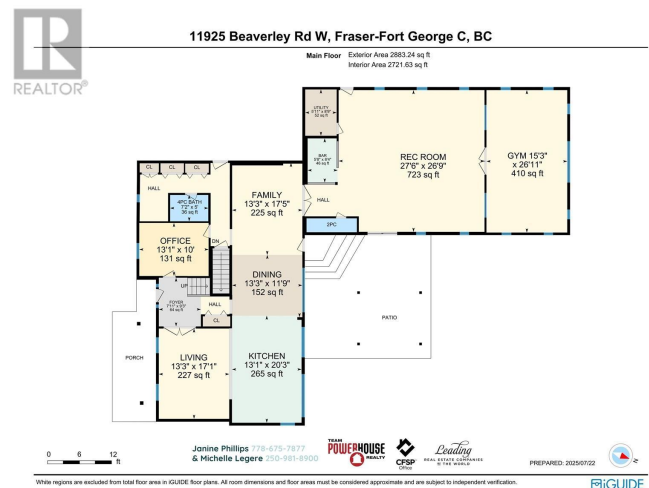
Experience the perfect blend of rural charm and modern convenience at 11925 West Beverly Road—just 10-15 minutes from downtown! Set on 5.75 fully fenced, horse-ready acres, this spacious home offers a layout perfect for families with 4 bedrooms and 2 baths upstairs, plus a separate in-law suite downstairs. Enjoy entertaining in the beautifully renovated kitchen with oversized quartz island, host large gatherings in the games room with plumbed bar and 2-piece bath, or enjoy a quiet evening on one of the patios. The barn's extended roof creates a stunning indoor/outdoor event space for 200+ guests. Professionally updated throughout—roofs, windows, boiler, kitchen, baths, lighting, floors & more. Ready for your horses—ready for your family! (id:6289)

Built in 1977

Essential Information

Listing #	R3030501
Price	\$1,549,900
Bedrooms	5
Bathrooms	5.00
Acres	5.75
Year Built	1977
Type	Single Family
Sub-Type	Freehold

Community Information



Address	11925 W Beaverly Road
Subdivision	N/A
City	Prince George
Province	British Columbia
Postal Code	V2N5A7

Amenities

Parking	Garage, Open, RV
# of Garages	2
View	View

Interior

Appliances	Washer, Dryer, Refrigerator, Stove, Dishwasher
Heating	Natural gas Forced air, Hot Water
Fireplace	Yes
# of Fireplaces	3
# of Stories	3
Has Basement	Yes

Exterior

Roof	Asphalt shingle
Foundation	Concrete Perimeter

Listing Details

Listing Office	Team Powerhouse Realty
----------------	------------------------



The trademarks MLS®, Multiple Listing Service® and the associated logos are owned by The Canadian Real Estate Association (CREA) and identify the quality of services provided by real estate professionals who are members of CREA. REALTOR®. Member of CREA and more.

Listing information last updated on October 14th, 2025 at 11:46pm PDT