

\$599,000 - 606 8833 Hazelbridge Way, Richmond

MLS® #R3029303

\$599,000

2 Bedroom, 1.00 Bathroom, 621 sqft

Single Family

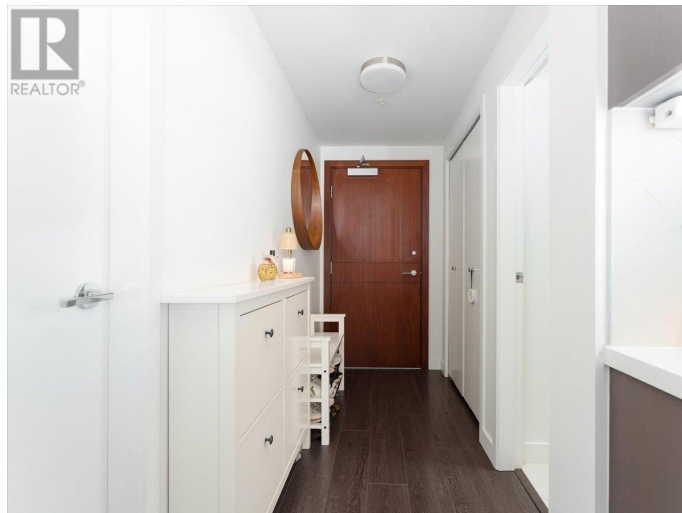
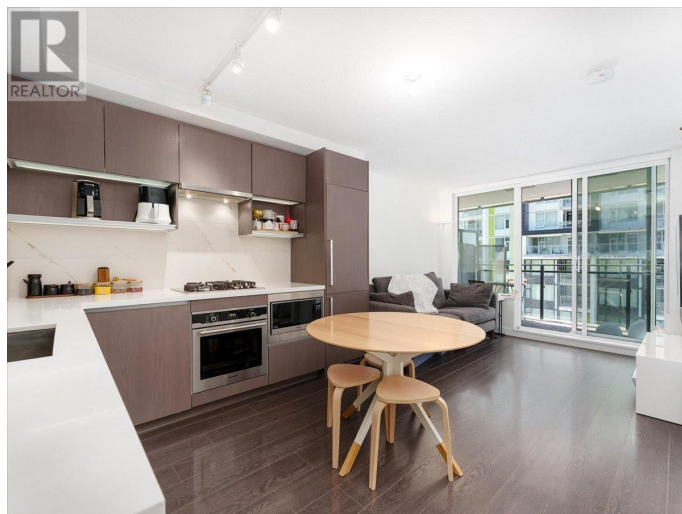
N/A, Richmond, British Columbia

One of Richmond's most sought-after master-planned communities by Concord Pacific. This thoughtfully designed Junior 2 Bedroom home offers 621 square ft of efficient living space, featuring an open-concept layout, modern finishes & functional second bedroom (without window) spacious enough to fit a single bed and cabinets - perfect for guests, a home office. Enjoy the unbeatable convenience of this vibrant neighborhood, just a 6-minute walk to the new Capstan Canada Line SkyTrain Station, making downtown Vancouver and YVR easily accessible. You're also surrounded by an abundance of shops, restaurants, cafes, and banks - all within walking distance. Families will appreciate being just a 4-minute drive to the nearest elementary school. Live with comfort and style amenities at your doorstep. (id:6289)

Built in 2016

Essential Information

Listing #	R3029303
Price	\$599,000
Bedrooms	2
Bathrooms	1.00
Square Footage	621
Year Built	2016
Type	Single Family
Sub-Type	Strata



Community Information

Address	606 8833 Hazelbridge Way
Subdivision	N/A
City	Richmond
Province	British Columbia
Postal Code	V6X0N3

Amenities

Amenities	Recreation, Shopping, Exercise Centre, Laundry - In Suite
Features	Central location, Elevator
Parking Spaces	1
Has Pool	Yes
Pool	Indoor pool

Interior

Interior Features	Drapes/Window coverings
Appliances	All, Oven - Built-In
Heating	Forced air
Cooling	Air Conditioned

Exterior

Exterior Features	Garden Area
-------------------	-------------

Listing Details

Listing Office	RE/MAX Real Estate Services
----------------	-----------------------------



The trademarks MLS®, Multiple Listing Service® and the associated logos are owned by The Canadian Real Estate Association (CREA) and identify the quality of services provided by real estate professionals who are members of CREA. REALTOR®. Member of CREA and more.

Listing information last updated on October 15th, 2025 at 3:16am PDT