

\$998,000 - 1 22551 Westminster Highway, Richmond

MLS® #R3028980

\$998,000

3 Bedroom, 3.00 Bathroom, 1,237 sqft
Single Family

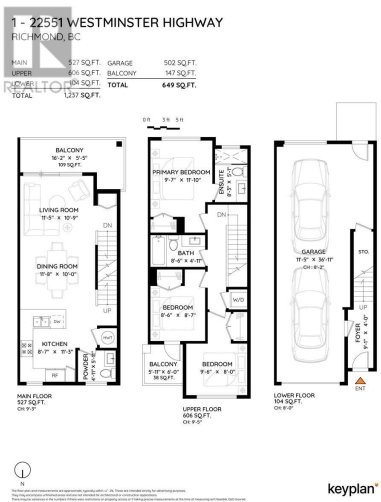
N/A, Richmond, British Columbia

Tucked quietly along the edge of Hamilton Community Park, Sarena introduces a rare opportunity to own one of just seven exclusive townhomes in a thoughtfully designed boutique development. Offering timeless design, private outdoor spaces, air conditioning and direct access to nature, Sarena delivers on quality and location. Featuring a spacious 3-bedroom, 3-bathroom layout across multiple levels, offering versatility for families, remote workers, or guests. The open-concept main floor is ideal for entertaining or everyday living, anchored by a gourmet kitchen. Premium stainless steel appliance package, sleek modern cabinetry with soft-close hardware, overweight ceilings & double garage. With only a handful of homes available, don't miss your chance. First time home Buyers are GST exempt! (id:6289)

Built in 2025

Essential Information

Listing #	R3028980
Price	\$998,000
Bedrooms	3
Bathrooms	3.00
Square Footage	1,237
Year Built	2025
Type	Single Family
Sub-Type	Strata



Community Information

Address	1 22551 Westminster Highway
Subdivision	N/A
City	Richmond
Province	British Columbia
Postal Code	V6V1B6

Amenities

Amenities	Recreation, Shopping
Features	Central location
Parking Spaces	2
Parking	Visitor Parking

Interior

Appliances	All
Heating	Heat Pump
Cooling	Air Conditioned

Listing Details

Listing Office eXp Realty



The trademarks MLS®, Multiple Listing Service® and the associated logos are owned by The Canadian Real Estate Association (CREA) and identify the quality of services provided by real estate professionals who are members of CREA. REALTOR®. Member of CREA and more.

Listing information last updated on October 14th, 2025 at 6:16am PDT