

\$2,088,000 - 2 847 E 10th Avenue, Vancouver

MLS® #R3028975

\$2,088,000

4 Bedroom, 4.00 Bathroom, 1,651 sqft

Single Family on 0.09 Acres

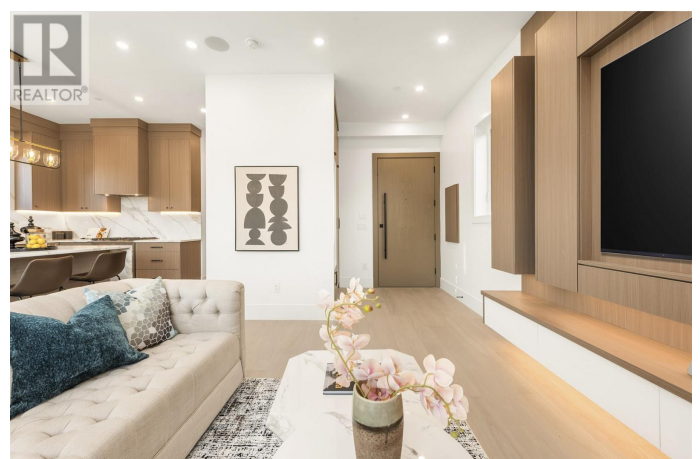
N/A, Vancouver, British Columbia

Beautiful BACK DUPLEX in PRIME location. As soon as you walk through the front door, you will instantly be impressed with the QUALITY of construction and MODERN finishings. The main floor features 10' HIGH CEILINGS, ENGINEERED HARDWOOD flooring, CUSTOM BUILT-INS, a great layout with dedicated living & dining room space, & OVERSIZED BI-FOLD WINDOWS that provide the ultimate INDOOR/OUTDOOR experience. The 2nd floor offers 3 bedrooms on the SAME LEVEL, perfect for family living; while the level above boasts a large 4th bedroom with a FULL BATH and BALCONY. Can also be used as a, REC ROOM, OFFICE, STUDENT RENTAL, or NANNY SUITE. Located just a block & a half from Fraser St & a short walk to the future Mount Pleasant SKYTRAIN STATION, you don't have to sacrifice LOCATION for SPACE and QUALITY. (id:6289)

Built in 2025

Essential Information

Listings #	R3028975
Price	\$2,088,000
Bedrooms	4
Bathrooms	4.00
Square Footage	1,651
Acres	0.09
Year Built	2025



Type	Single Family
Sub-Type	Strata

Community Information

Address	2 847 E 10th Avenue
Subdivision	N/A
City	Vancouver
Province	British Columbia
Postal Code	V5T2A9

Amenities

Amenities	Recreation, Shopping, Laundry - In Suite
Features	Central location
Parking Spaces	1
Parking	Garage
# of Garages	1

Interior

Appliances	All
Heating	Forced air, Heat Pump
Cooling	Air Conditioned

Exterior

Exterior Features	Garden Area
-------------------	-------------

Listing Details

Listing Office	RE/MAX Select Realty
----------------	----------------------



The trademarks MLS®, Multiple Listing Service® and the associated logos are owned by The Canadian Real Estate Association (CREA) and identify the quality of services provided by real estate professionals who are members of CREA. REALTOR®. Member of CREA and more.

Listing information last updated on October 13th, 2025 at 1:31pm PDT