

\$1,099,999

- 9 5545 Peach Road|sardis South, Chilliwack

MLS® #R3028709

\$1,099,999

5 Bedroom, 4.00 Bathroom, 2,924 sqft
Single Family on 0.09 Acres

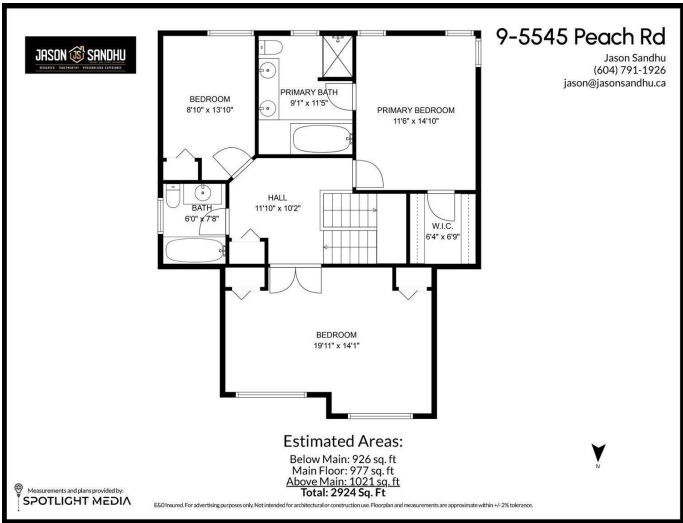
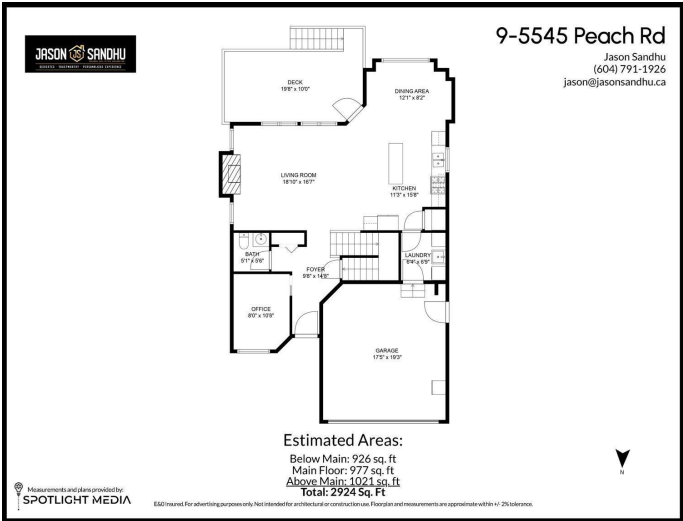
N/A, Chilliwack, British Columbia

Welcome to this well-maintained 5-bed, 4-bath Sardis home"â€•perfect for families! Just 2 blocks from the Vedder River and minutes from top schools, parks, shopping, and Cultus Lake. The open-concept main floor features a modern kitchen with updated stainless steel appliances, a large eating bar, hardwood floors, a cozy gas fireplace, and a den/office. Step outside to a fully fenced, manicured yard with an expanded patio and stunning southern mountain views. Upstairs offers 3 spacious bedrooms, including a master with ensuite and soaker tub; one bedroom can be converted back into 2. The finished basement includes a 2 bedroom suite with separate access and laundry. Located in a quiet bareland strata! *PREC - Personal Real Estate Corporation (id:6289)

Built in 2005

Essential Information

Listing #	R3028709
Price	\$1,099,999
Bedrooms	5
Bathrooms	4.00
Square Footage	2,924
Acres	0.09
Year Built	2005
Type	Single Family



Sub-Type Strata

Community Information

Address 9 5545 Peach Road|sardis South
Subdivision N/A
City Chilliwack
Province British Columbia
Postal Code V2R5Y5

Amenities

Amenities Laundry - In Suite
Parking Garage, Open
of Garages 2
View Mountain view, Valley view, View (panoramic)

Interior

Appliances Washer, Dryer, Refrigerator, Stove, Dishwasher
Heating Natural gas Baseboard heaters, Forced air
Fireplace Yes
of Fireplaces 1
of Stories 3
Has Basement Yes

Listing Details

Listing Office Pathway Executives Realty Inc (Yale Rd)



The trademarks MLS®, Multiple Listing Service® and the associated logos are owned by The Canadian Real Estate Association (CREA) and identify the quality of services provided by real estate professionals who are members of CREA. REALTOR®. Member of CREA and more.

Listing information last updated on October 13th, 2025 at 7:01pm PDT