

\$484,900 - 515 15351 101 Avenue, Surrey

MLS® #R3028374

\$484,900

1 Bedroom, 1.00 Bathroom, 574 sqft

Single Family

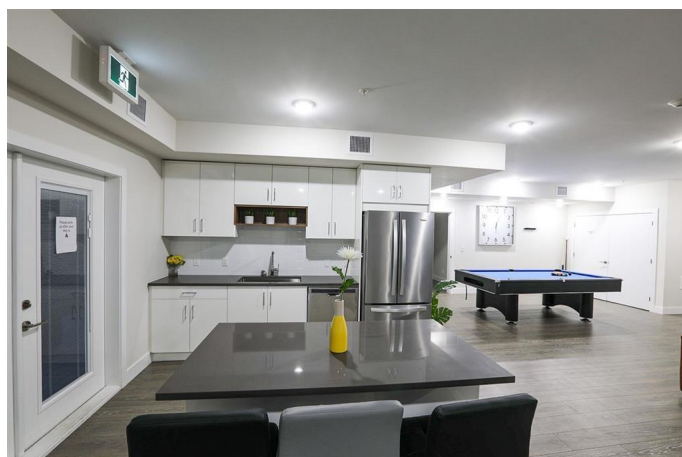
N/A, Surrey, British Columbia

Discover this inviting penthouse unit, ideally situated in a prime Guildford location just steps from shopping, transit, parks, and easy access to the Port Mann Bridge. This immaculate home features nearly 600?sq?ft of open-concept living space and is ready for quick possession , Spacious & Light-Filled: Open layout with high ceilings, large windows in the primary bedroom, and a southern-facing balcony offering city and mountain views Amenities Galore: The building includes an exercise centre, recreation room, outdoor garden, plus underground parking and storage locker included Turn-Key Condition: Immaculate unit, perfect for first-time buyers or investors This stylish penthouse, built in 2019, comes with one parking stall and locker. (id:6289)

Built in 2019

Essential Information

Listing #	R3028374
Price	\$484,900
Bedrooms	1
Bathrooms	1.00
Square Footage	574
Year Built	2019
Type	Single Family
Sub-Type	Strata
Style	Other



Community Information

Address	515 15351 101 Avenue
Subdivision	N/A
City	Surrey
Province	British Columbia
Postal Code	V2Y3N1

Amenities

Amenities	Clubhouse
Utilities	Electricity, Natural Gas
Parking Spaces	1
Parking	Garage
# of Garages	1

Interior

Appliances	Washer, Dryer, Refrigerator, Stove, Dishwasher
Heating	Electric
# of Stories	5
Basement	Unknown

Listing Details

Listing Office eXp Realty of Canada, Inc.



The trademarks MLS®, Multiple Listing Service® and the associated logos are owned by The Canadian Real Estate Association (CREA) and identify the quality of services provided by real estate professionals who are members of CREA. REALTOR®. Member of CREA and more.

Listing information last updated on October 15th, 2025 at 7:32am PDT