

\$995,000 - 119 14500 Morris Valley Road, Mission

MLS® #R3028303

\$995,000

4 Bedroom, 4.00 Bathroom, 2,926 sqft

Single Family on 0.23 Acres

N/A, Mission, British Columbia

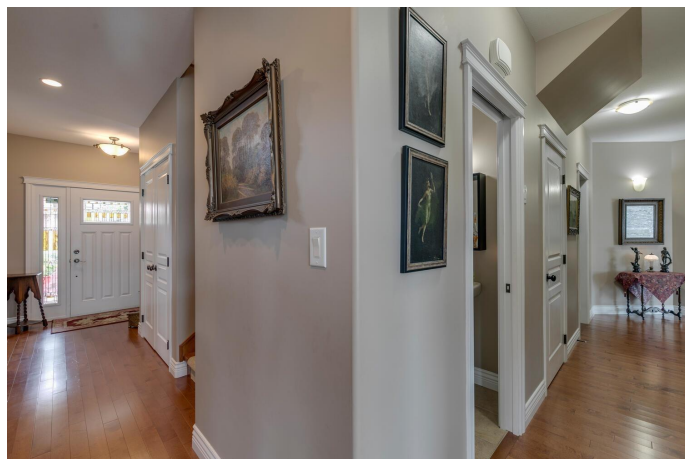
Don't miss this incredible gem in Eagle Point Estates-one of the biggest lots in the community! This beautifully designed 2-storey home features 4 spacious bedrooms plus a private office with its own entrance, perfect as a 5th bedroom or home gym. The backyard is a gardener's dream: fully fenced, professionally landscaped, and complete with raised vegetable beds. Inside, enjoy a stunning designer kitchen and primary suites on both the main and upper floors. Tons of storage with a huge 5-ft crawl space, plus peace of mind with a powerful Generac 22kW backup generator. All just steps from Sandpiper Golf Course and minutes to Harrison Lake! (id:6289)

Built in 2018

Essential Information

Listing #	R3028303
Price	\$995,000
Bedrooms	4
Bathrooms	4.00
Square Footage	2,926
Acres	0.23
Year Built	2018
Type	Single Family
Sub-Type	Strata
Style	2 Level

Community Information



Address	119 14500 Morris Valley Road
Subdivision	N/A
City	Mission
Province	British Columbia
Postal Code	V0M1A1

Amenities

Amenities	Air Conditioning
Utilities	Electricity, Water
Parking Spaces	6
Parking	Garage
# of Garages	1
View	Lake view, Mountain view

Interior

Appliances	Storage Shed, Wet Bar, Wine Fridge
Heating	Electric
Cooling	Air Conditioned
Fireplace	Yes
# of Fireplaces	1
Has Basement	Yes
Basement	Unknown

Listing Details

Listing Office	Top Producers Realty Ltd.
----------------	---------------------------



The trademarks MLS®, Multiple Listing Service® and the associated logos are owned by The Canadian Real Estate Association (CREA) and identify the quality of services provided by real estate professionals who are members of CREA. REALTOR®. Member of CREA and more.

Listing information last updated on October 13th, 2025 at 5:31am PDT