

\$368,000 - 1913 13438 Central Avenue, Surrey

MLS® #R3021798

\$368,000

1 Bedroom, 1.00 Bathroom, 388 sqft
Single Family

N/A, Surrey, British Columbia

Great investment opportunity. Highly desirable Micro2 condo unit at Prime On The Plaza Tower that's in the heart of DT Surrey. This efficiently designed large studio can reconfigure as a two bedroom unit.

Semi-furnished with two built-in wall beds and movable glass wall partition system. Includes one parking stall and storage locker. Amenities on 5 floors such as gym, sauna/stream rooms, music rooms, offices, yoga room, party rooms & more. Just steps from Surrey Central Station, bus loop, Surrey Central City Mall, SFU, KPU, etc. Great for first time buyers and investors alike. Open House September 6th 2-4pm (id:6289)

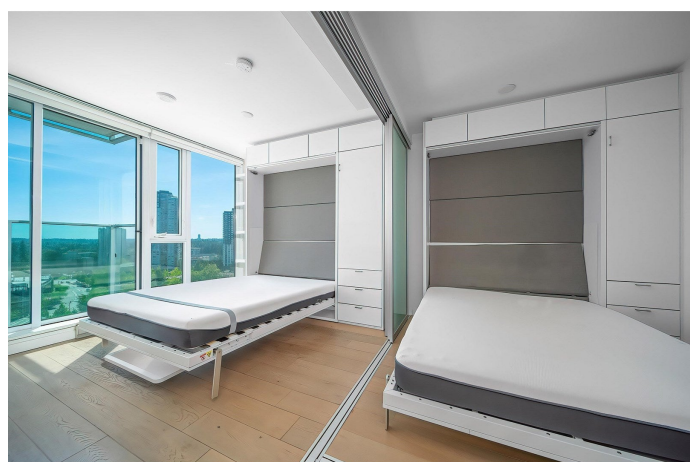
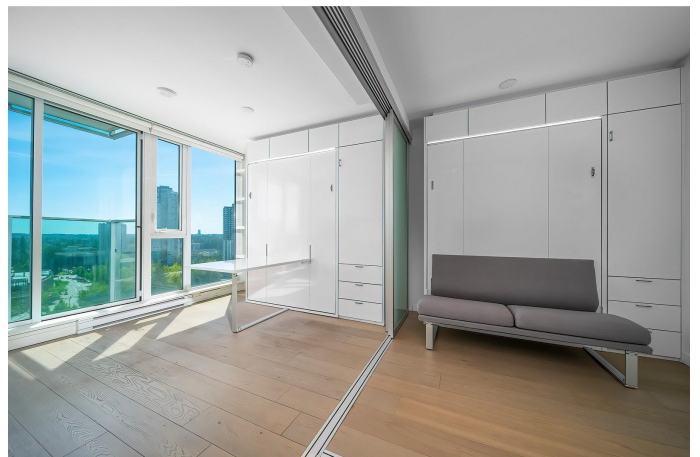
Built in 2019

Essential Information

Listing #	R3021798
Price	\$368,000
Bedrooms	1
Bathrooms	1.00
Square Footage	388
Year Built	2019
Type	Single Family
Sub-Type	Strata
Style	Other

Community Information

Address 1913 13438 Central Avenue



Subdivision N/A
City Surrey
Province British Columbia
Postal Code V3T0N2

Amenities

Amenities Exercise Centre, Laundry - In Suite, Recreation Centre, Sauna, Security/Concierge
Utilities Electricity, Water
Parking Spaces 1
Parking Underground
View City view

Interior

Appliances Washer, Dryer, Refrigerator, Stove, Dishwasher
Heating Electric Baseboard heaters
of Stories 37
Basement Unknown

Listing Details

Listing Office Nu Stream Realty Inc.



The trademarks MLS®, Multiple Listing Service® and the associated logos are owned by The Canadian Real Estate Association (CREA) and identify the quality of services provided by real estate professionals who are members of CREA. REALTOR®. Member of CREA and more.

Listing information last updated on October 22nd, 2025 at 11:46pm PDT