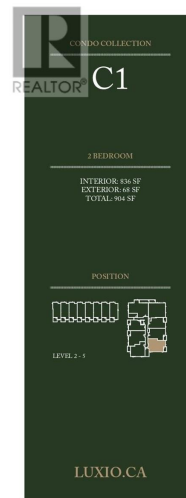


MLS® #R2969435

2 Bedroom, 2.00 Bathroom, 836 sqft
Single Family

N/A, Richmond, British Columbia



This is not an offering for sale. Any such offering can only be made after a disclosure document. The developer reserves the right to make changes and modifications to the information contained herein. © 2004 MCS Development, Inc. All rights reserved. MCS and Konic are trademarks of MCS Development, Inc.

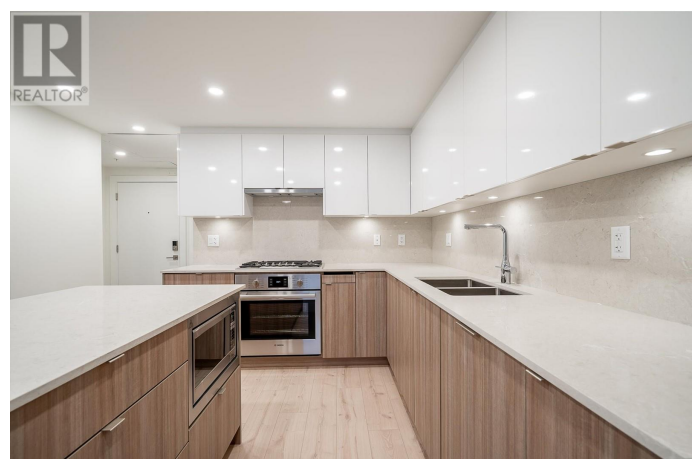
Built in 2024

Essential Information

| | |
|----------------|---------------|
| Listing # | R2969435 |
| Price | \$778,000 |
| Bedrooms | 2 |
| Bathrooms | 2.00 |
| Square Footage | 836 |
| Year Built | 2024 |
| Type | Single Family |
| Sub-Type | Strata |

Community Information

Address 206 8428 Park Road



| | |
|-------------|------------------|
| Subdivision | N/A |
| City | Richmond |
| Province | British Columbia |
| Postal Code | V6Y0K1 |

Amenities

| | |
|----------------|---|
| Amenities | Recreation, Shopping, Exercise Centre, Laundry - In Suite |
| Features | Central location, Elevator |
| Parking Spaces | 1 |
| Parking | Visitor Parking |

Interior

| | |
|---------|-----------------|
| Heating | Heat Pump |
| Cooling | Air Conditioned |

Exterior

| | |
|-------------------|-------------|
| Exterior Features | Garden Area |
|-------------------|-------------|

Listing Details

| | |
|----------------|------------------|
| Listing Office | Macdonald Realty |
|----------------|------------------|



The trademarks MLS®, Multiple Listing Service® and the associated logos are owned by The Canadian Real Estate Association (CREA) and identify the quality of services provided by real estate professionals who are members of CREA. REALTOR®. Member of CREA and more.

Listing information last updated on October 15th, 2025 at 3:16pm PDT