

# \$1,780,000 - 610 3533 Ross Drive, Vancouver

MLS® #R2873365

**\$1,780,000**

3 Bedroom, 2.00 Bathroom, 1,277 sqft

Single Family

N/A, Vancouver, British Columbia

The Residences at Nobel Park by Polygon. Located at UBC's award-winning Wesbrook Village. This S.W. facing corner unit over 1270 sqft features open and functional layout. Brand name stainless steel appliances, 9' high ceilings, A/C and more! 3 Spacious bedrooms, especially the master bedroom, comes with a walk-in closet and a spa-inspired ensuite with tiled walls. Walking distance to restaurants, shops and school Great for live-in or investment! Book your showing today. (id:6289)

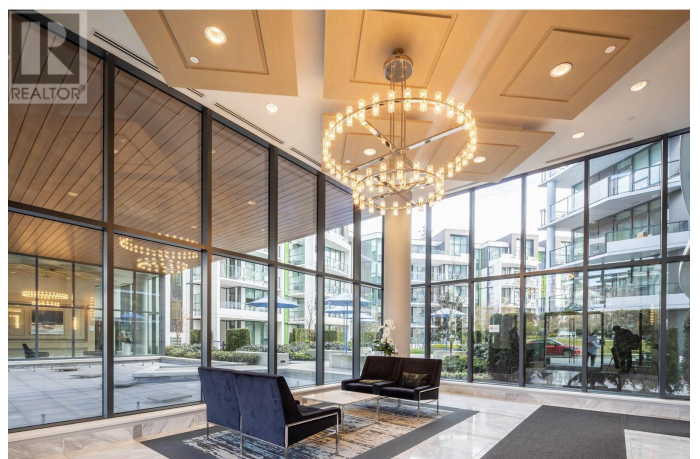
Built in 2020

## Essential Information

Listing #	R2873365
Price	\$1,780,000
Bedrooms	3
Bathrooms	2.00
Square Footage	1,277
Year Built	2020
Type	Single Family
Sub-Type	Leasehold Condo/Strata

## Community Information

Address	610 3533 Ross Drive
Subdivision	N/A
City	Vancouver
Province	British Columbia
Postal Code	V6S0L3



**Amenities**

Amenities	Recreation, Shopping, Exercise Centre
Features	Elevator
Parking Spaces	1
Parking	Underground

**Interior**

Appliances	All
Heating	Heat Pump
Cooling	Air Conditioned

**Listing Details**

Listing Office      Royal Pacific Realty Corp.



The trademarks MLS®, Multiple Listing Service® and the associated logos are owned by The Canadian Real Estate Association (CREA) and identify the quality of services provided by real estate professionals who are members of CREA. REALTOR®. Member of CREA and more.

Listing information last updated on October 15th, 2025 at 3:16am PDT