

\$995,000 - 12035 222 Street, Maple Ridge

MLS® #R2849049

\$995,000

0 Bedroom, 0.00 Bathroom,
Vacant Land on 0.17 Acres

N/A, Maple Ridge, British Columbia

Being sold together with neighbouring property 22195 Dewdney Trunk Rd. This residential lot is being used as an overflow parking lot for the professional medical building next door. Potential to re-develop. See MLS#C8057547 for more details! (id:6289)

Essential Information

Listing #	R2849049
Price	\$995,000
Bathrooms	0.00
Acres	0.17
Type	Vacant Land
Sub-Type	Freehold

Community Information

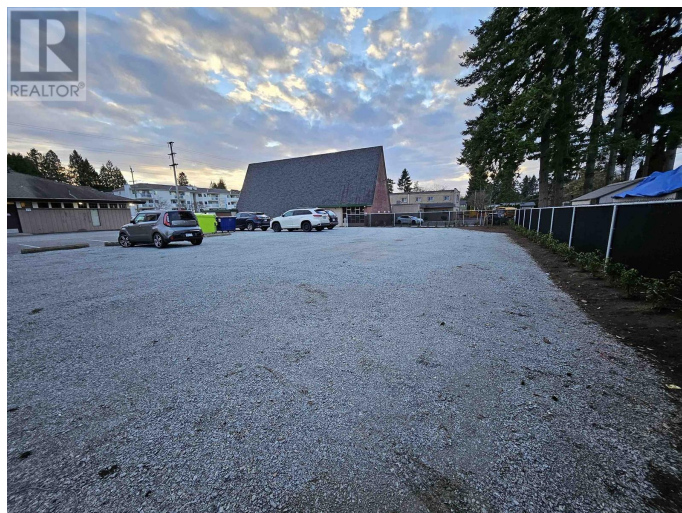
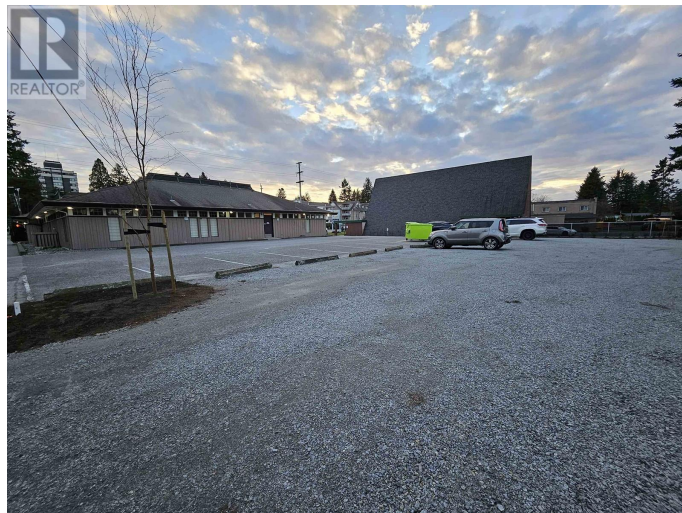
Address	12035 222 Street
Subdivision	N/A
City	Maple Ridge
Province	British Columbia
Postal Code	V2X5W2

Amenities

Amenities	Shopping
Features	Central location

Listing Details

Listing Office	RE/MAX LIFESTYLES REALTY
----------------	--------------------------



The trademarks MLS®, Multiple Listing Service® and the associated logos are owned by The Canadian Real Estate Association (CREA) and identify the quality of services provided by real estate professionals who are members of CREA. REALTOR®. Member of CREA and more.

Listing information last updated on October 14th, 2025 at 8:01pm PDT