

\$3,398,000 - 4870 Boundary Road, Burnaby

MLS® #R2847716

\$3,398,000

4 Bedroom, 0.00 Bathroom, 1,350 sqft
Single Family on 0.10 Acres

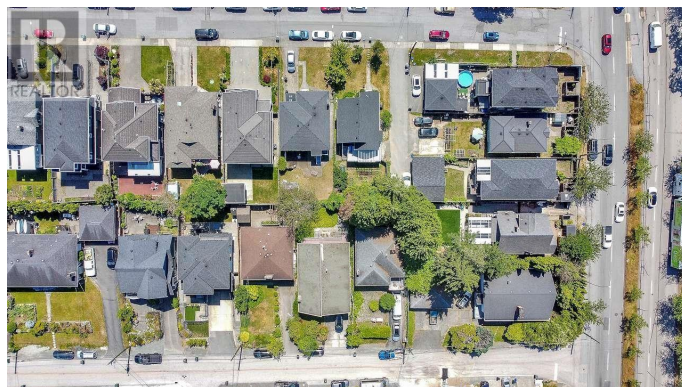
N/A, Burnaby, British Columbia

INVEST WITH CONFIDENCE in a rare opportunity to acquire ELEVEN properties along Boundary Road, totalling 49,943 sq ft. This prime location offers easy access to parks, trails, community rec centers, schools, Metrotown/Metropolis shopping, and fine dining. Situated within Vancouver's Transit Oriented Development area, close to Joyce & Patterson Skytrain stations. In recent events, the City of Burnaby has completely eliminated the FAR limitations. New zoning framework allows various options for development of up to 8 storeys building height with Mountain views! Properties included: 4870 Boundary Rd, 4860 Boundary Rd, 4850 Boundary Rd, 3705 Price St, 3717 Price St, 3723 Price St, 3727 Price St, 3708 Cardiff St, 3718 Cardiff St, 3724 Cardiff St, 3728 Cardiff St. (id:6289)

Built in 1948

Essential Information

Listing #	R2847716
Price	\$3,398,000
Bedrooms	4
Bathrooms	0.00
Square Footage	1,350
Acres	0.10
Year Built	1948
Type	Single Family
Sub-Type	Freehold



Style 2 Level

Community Information

Address 4870 Boundary Road
Subdivision N/A
City Burnaby
Province British Columbia
Postal Code V5R2N9

Amenities

Amenities Recreation, Shopping
Features Central location
Parking Detached Garage, Garage
of Garages 2

Interior

Heating Forced air
Fireplace Yes
of Fireplaces 1
Basement Unknown

Listing Details

Listing Office Century 21 Coastal Realty Ltd.



The trademarks MLS®, Multiple Listing Service® and the associated logos are owned by The Canadian Real Estate Association (CREA) and identify the quality of services provided by real estate professionals who are members of CREA. REALTOR®. Member of CREA and more.

Listing information last updated on October 15th, 2025 at 7:32am PDT