

# \$199,990 - 323 Loganberry Avenue, Kitimat

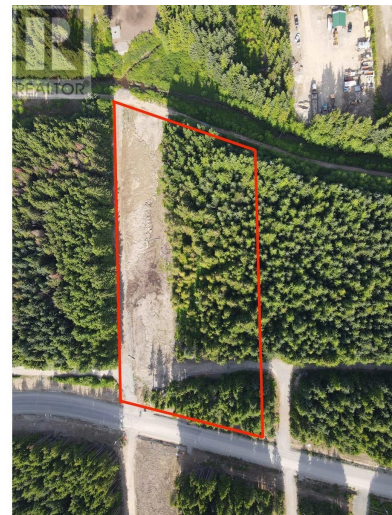
MLS® #R2840877

**\$199,990**

0 Bedroom, 0.00 Bathroom,  
Vacant Land on 3.66 Acres

N/A, Kitimat, British Columbia

Just a short drive of downtown Kitimat, but still tucked away within the privacy of sought after Strawberry Meadows subdivision, a family-friendly suburb with a beautiful mix of custom homes dotted throughout the already well-established neighbourhood. One of the larger residential lots in the Meadows; sitting at 3.66 acres; half of the lot has been cleared and seeded to meadow; with just under 80m of frontage - lots of building options available. A short pedal away from Kitimat's new bike park, a quad ride to the river, and a short drive to Minette Bay Park, where you can launch your kayak and explore the tidewater estuary. What a spot to live! (id:6289)



## Essential Information

Listing #	R2840877
Price	\$199,990
Bathrooms	0.00
Acres	3.66
Type	Vacant Land
Sub-Type	Freehold

## Community Information

Address	323 Loganberry Avenue
Subdivision	N/A
City	Kitimat
Province	British Columbia
Postal Code	V8C0B6



## Listing Details

Listing Office Century 21 Northwest Realty Ltd.



The trademarks MLS®, Multiple Listing Service® and the associated logos are owned by The Canadian Real Estate Association (CREA) and identify the quality of services provided by real estate professionals who are members of CREA. REALTOR®. Member of CREA and more.

Listing information last updated on October 15th, 2025 at 2:31pm PDT