

\$1,499,000 - 1605 E 8th Avenue, Vancouver

MLS® #R2840605

\$1,499,000

4 Bedroom, 2.00 Bathroom, 1,438 sqft

Single Family on 0.08 Acres

N/A, Vancouver, British Columbia

Numerous opportunities for the savvy investor!

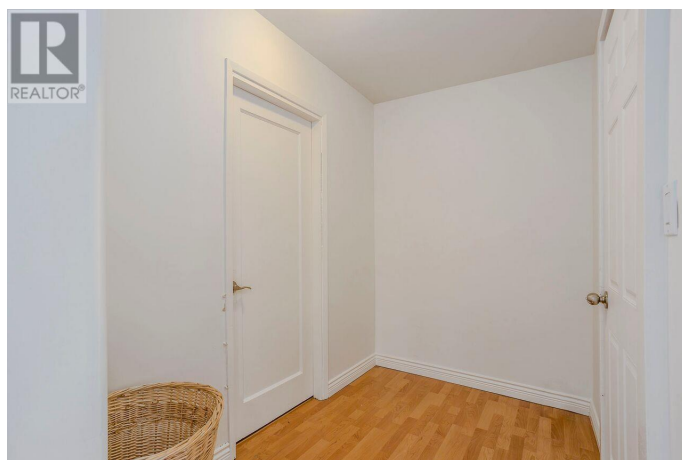
750 metres approximately from the SkyTrain station entrance, this green, grassy 3,386 square foot lot affords beautiful backyard mountain views. Well-maintained house has 2 bed owners' suite up plus ground-floor legal suite. Excellent tenant upstairs and vacant possession possible downstairs. Favourable RM-4N zoning: expand or build . Or buy & hold to realize the potential of this key transit hub! All measurements are approximate and to be verified by Buyer. All potential development information is not guaranteed and is to be verified by Buyer and confirmed with the City of Vancouver. measured by bc floor plans (id:6289)

Built in 1923

Essential Information

| | |
|----------------|---------------|
| Listing # | R2840605 |
| Price | \$1,499,000 |
| Bedrooms | 4 |
| Bathrooms | 2.00 |
| Square Footage | 1,438 |
| Acres | 0.08 |
| Year Built | 1923 |
| Type | Single Family |
| Sub-Type | Freehold |
| Style | 2 Level |

Community Information



| | |
|-------------|-------------------|
| Address | 1605 E 8th Avenue |
| Subdivision | N/A |
| City | Vancouver |
| Province | British Columbia |
| Postal Code | V5N1T6 |

Amenities

| | |
|----------|------------------|
| Features | Central location |
|----------|------------------|

Interior

| | |
|------------|--------------------------|
| Appliances | All, Refrigerator, Stove |
| Heating | Electric |
| Basement | Unknown |

Listing Details

| | |
|----------------|--------------------------|
| Listing Office | RE/MAX Select Properties |
|----------------|--------------------------|



The trademarks MLS®, Multiple Listing Service® and the associated logos are owned by The Canadian Real Estate Association (CREA) and identify the quality of services provided by real estate professionals who are members of CREA. REALTOR®. Member of CREA and more.

Listing information last updated on October 12th, 2025 at 11:16pm PDT