

# \$188,000 - 300 Loganberry Avenue, Kitimat

MLS® #R2840238

**\$188,000**

0 Bedroom, 0.00 Bathroom,  
Vacant Land on 1.55 Acres

N/A, Kitimat, British Columbia

This treed lot backs onto a greenbelt right of way and has a 10 metre easement buffer between the neighbouring lot; sitting at 1.56 acres with a 42 metre frontage and 157 metres in depth. If you want to selectively clear a lot to suit your building plans, this one offers that blank canvas! Just a short drive of downtown Kitimat, but still tucked away within the privacy of sought after Strawberry Meadows subdivision, a family-friendly suburb with a beautiful mix of custom homes dotted throughout the already well-established neighbourhood. A short pedal away from Kitimat's new bike park, a quad ride to the river, and a short drive to Minette Bay Park, where you can launch your kayak and explore the tidewater estuary. What a spot to live!

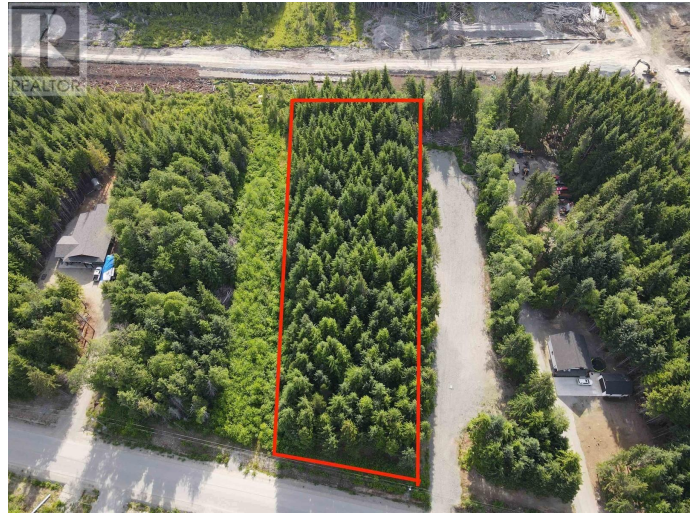
(id:6289)

## Essential Information

Listing #	R2840238
Price	\$188,000
Bathrooms	0.00
Acres	1.55
Type	Vacant Land
Sub-Type	Freehold

## Community Information

Address	300 Loganberry Avenue
Subdivision	N/A



City	Kitimat
Province	British Columbia
Postal Code	V8C0B6

## **Listing Details**

Listing Office      Century 21 Northwest Realty Ltd.



The trademarks MLS®, Multiple Listing Service® and the associated logos are owned by The Canadian Real Estate Association (CREA) and identify the quality of services provided by real estate professionals who are members of CREA. REALTOR®. Member of CREA and more.

Listing information last updated on October 15th, 2025 at 2:46pm PDT