

\$320,000 - 4551 Craig Drive, Prince George

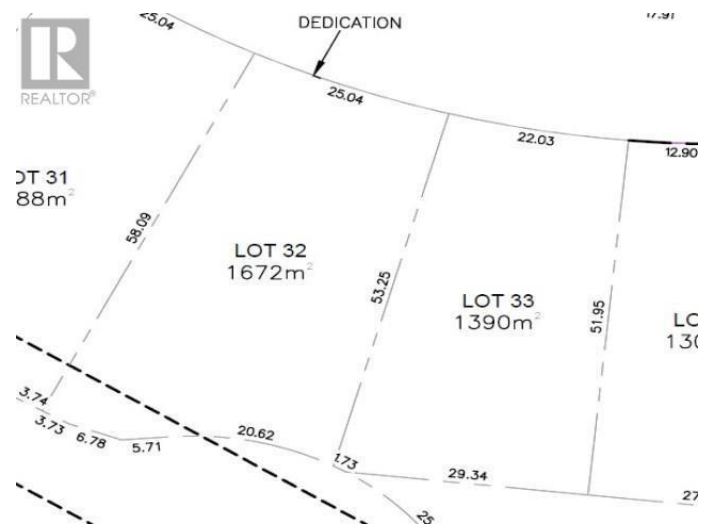
MLS® #R2798534

\$320,000

0 Bedroom, 0.00 Bathroom,
Vacant Land on 0.34 Acres

N/A, Prince George, British Columbia

Truly one of the nicest subdivisions in Prince George. Close to Edgewood Elementry School and the Nechako River. The central location makes it close to all amenities. (id:6289)



Essential Information

Listing #	R2798534
Price	\$320,000
Bathrooms	0.00
Acres	0.34
Type	Vacant Land
Sub-Type	Freehold

Community Information

Address	4551 Craig Drive
Subdivision	N/A
City	Prince George
Province	British Columbia
Postal Code	V2K0B9

Listing Details

Listing Office	Royal LePage Aspire Realty
----------------	----------------------------



The trademarks MLS®, Multiple Listing Service® and the associated logos are owned by The Canadian Real Estate Association (CREA) and identify the quality of services provided by real estate professionals who are members of CREA. REALTOR®. Member of CREA and more.

Listing information last updated on October 14th, 2025 at 10:31pm PDT