

\$700,000 - 3415 Route 134, Shediac Cape

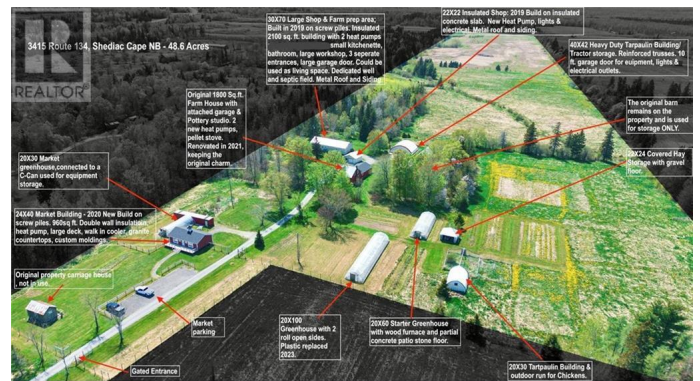
MLS® #NB113057

\$700,000

3 Bedroom, 2.00 Bathroom, 1,945 sqft
Single Family on 48.60 Acres

N/A, Shediac Cape, New Brunswick

Welcome to this incredible 48+ acre property in Shediac Cape a rare chance to own a piece of local history dating back to the 1830s. Just minutes from Shediacs amenities, tourist attractions, and major highways, this property offers the perfect blend of country charm and business opportunity. Launch your dream venture from the market place storefront with ample parking, cultivate produce in the large greenhouses and fields, and take advantage of the new oversized garage and outbuildings for operations or storage. The layout is also ideal for a nursery or landscaping business, offering space for growing plants, trees, and hosting customers with ease. At the heart of the property is a beautifully updated 3-bedroom, 2-bath farmhouse featuring a modern kitchen, dining and living rooms, mudroom, pottery studio, and attached garage. Comfort is enhanced by two mini-split heat pumps and a pellet stove. A separate private space offers excellent income potential as a rental, Airbnb, or guest retreat. This estate provides multiple income streams and a serene lifestyle surrounded by natural beauty. Whether you're growing food, running a greenhouse, selling plants, or welcoming guests, this property is a canvas for your vision. *Please note that the property is NOT currently being used as a working farm or commercial property, zoning is RA* Dont miss this unique opportunity contact us today to schedule a viewing! (id:6289)



ROYAL LEPAGE ATLANTIC

New Brunswick Real Estate Board



Essential Information

Listing #	NB113057
Price	\$700,000
Bedrooms	3
Bathrooms	2.00
Square Footage	1,945
Acres	48.60
Type	Single Family
Sub-Type	Freehold
Style	2 Level

Community Information

Address	3415 Route 134
Subdivision	N/A
City	Shediac Cape
Province	New Brunswick
Postal Code	E4P3G4

Amenities

Features	Level lot
Parking	Attached Garage
# of Garages	1

Interior

Heating	Electric, Pellet Heat Pump, Stove
Cooling	Heat Pump

Exterior

Exterior	Aluminum siding
Exterior Features	Partially landscaped
Foundation	Stone

Listing Details

Listing Office	Royal LePage Atlantic
----------------	-----------------------



The trademarks MLS®, Multiple Listing Service® and the associated logos are owned by The Canadian Real Estate Association (CREA) and identify the quality of services provided by real estate professionals who are members of

CREA. REALTOR®. Member of CREA and more.
Listing information last updated on October 15th, 2025 at 3:01pm PDT