

\$2,400 - 2 - 16 Park Drive, Whitchurch-Stouffville (stouffville)

MLS® #N12459477

\$2,400

2 Bedroom, 1.00 Bathroom,
Multi-family

Stouffville, Whitchurch-Stouffville (stouffville),
Ontario

Beautifully Renovated Unit Inside This Quiet,
Friendly Triplex. Large Rooms, With Lots Of
Extra Space Conveniently Located Within
Walking Distance To Coffee Shops And Local
Amenities And Close To The Go Station.
Shared 1/3 Utility Extra plus water softener
\$10/mth. (id:6289)

Essential Information

Listing #	N12459477
Price	\$2,400
Bedrooms	2
Bathrooms	1.00
Type	Multi-family

Community Information

Address	2 - 16 Park Drive
Subdivision	Stouffville
City	Whitchurch-Stouffville (stouffville)
Province	Ontario
Postal Code	L4A1G1

Amenities

Parking Spaces	1
Parking	No Garage

Interior



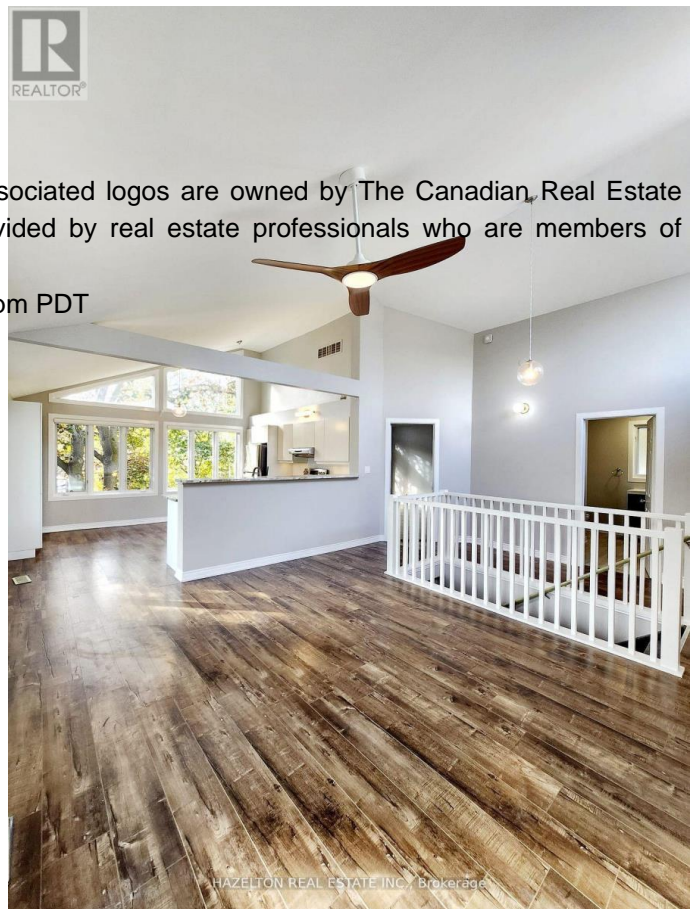
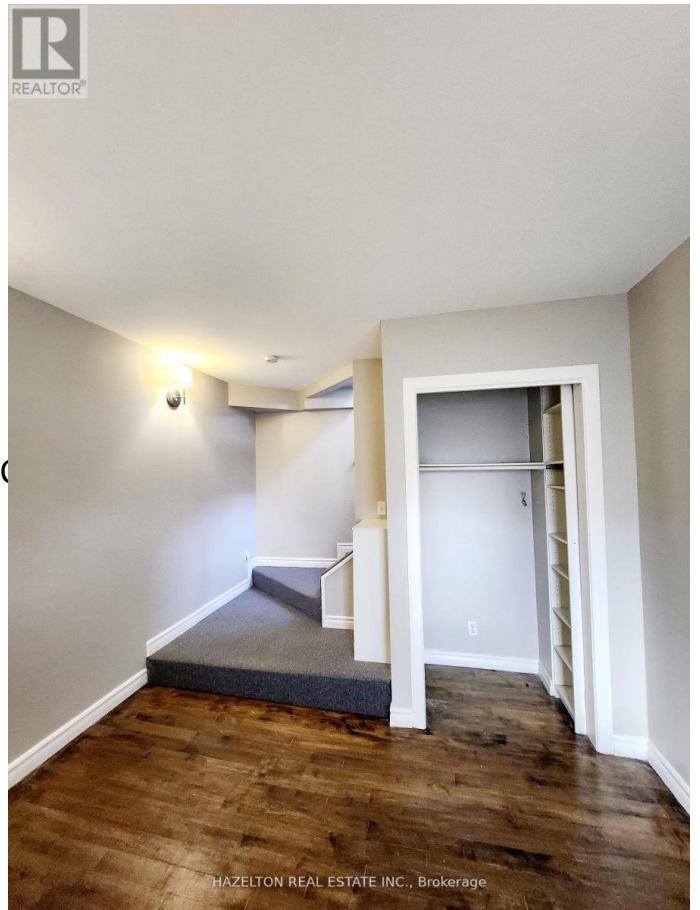
Heating	Natural gas Forced air
Cooling	Central air conditioning
# of Stories	2

Exterior

Exterior	Vinyl siding
Foundation	Concrete

Listing Details

Listing Office	HAZELTON REAL ESTATE INC
----------------	--------------------------



The trademarks MLS®, Multiple Listing Service® and the associated logos are owned by The Canadian Real Estate Association (CREA) and identify the quality of services provided by real estate professionals who are members of CREA. REALTOR®. Member of CREA and more.

Listing information last updated on October 14th, 2025 at 3:16pm PDT