

\$1,599,000 - 147 Lebovic Campus Drive, Vaughan (patterson)

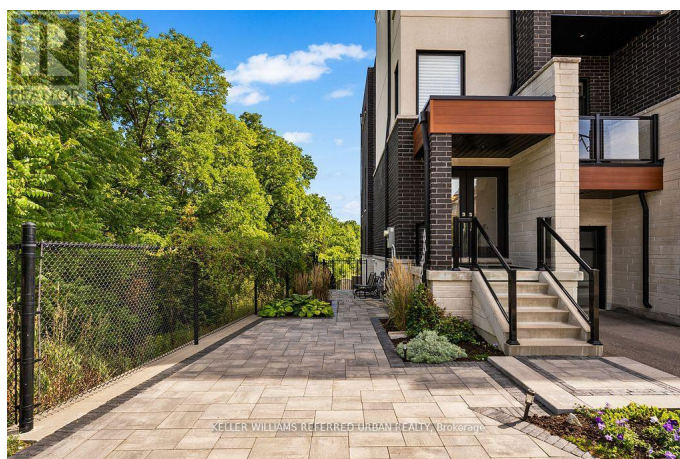
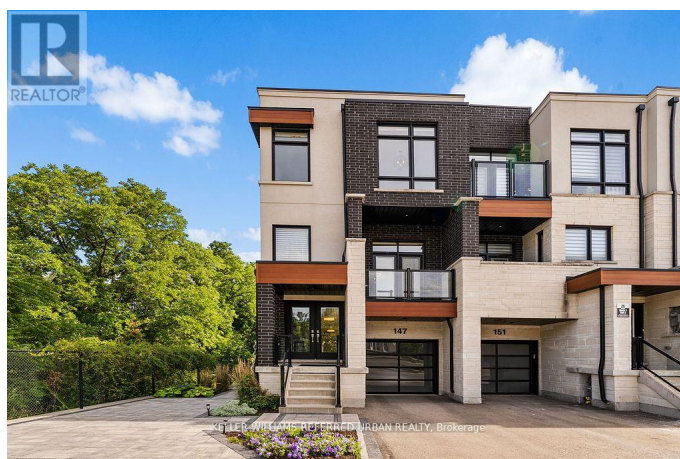
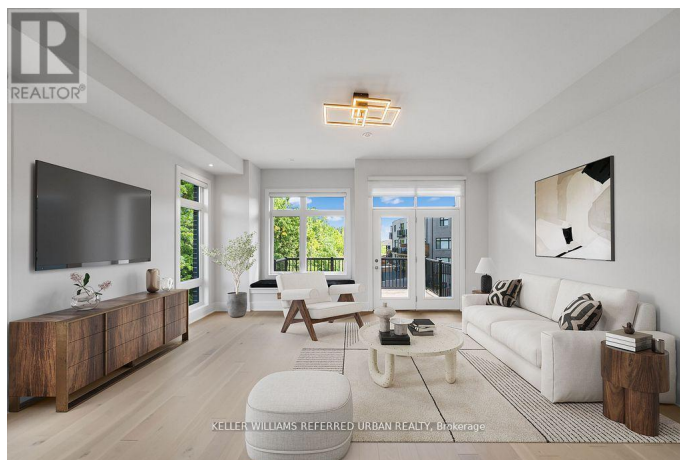
MLS® #N12457104

\$1,599,000

4 Bedroom, 3.00 Bathroom,
Single Family on 0.00 Acres

Patterson, Vaughan (patterson), Ontario

****INCLUDES INCOME GENERATING TWO STOREY BASEMENT APARTMENT **** The Designers Own Dream Home in Patterson. Set on a rare 33' ravine lot with a walk-out basement and an extra-wide 21 interior, this end-unit townhome is unlike anything else in Patterson. The two-storey basement apartment, complete with laundry, offers versatility perfect for multi-generational living or as a rental suite generating approximately \$2,700/month. Envisioned by a renowned interior designer, every detail has been thoughtfully curated to surpass model home standards. Step inside to soaring 10 ceilings on the main floor and 9 on the second, smooth ceilings throughout, and rich 5" hardwood paired with 7" modern baseboards and shaker doors. The kitchen is a true showpiece, anchored by a 10' island with dual waterfall edges, quartz counters, walk-in pantry, under-cabinet lighting, and a window seat that captures ravine views. The primary suite offers a retreat-like feel with a custom walk-in closet and spa ensuite featuring a standalone tub, quartz niches, sleek skirted one-piece toilets, and upgraded fixtures. Outdoors, professional landscaping, interlock walkways, private side patio with backyard access, extended deck, multiple patios, and vinyl fencing create a private oasis. Added conveniences include dual laundry rooms, CAT5 wiring, BBQ gas line, and extra parking. This is more than a



home it's a statement of style, function, and luxury living. *Note photos are virtually staged.
(id:6289)

Essential Information

Listing #	N12457104
Price	\$1,599,000
Bedrooms	4
Bathrooms	3.00
Acres	0.00
Type	Single Family
Sub-Type	Freehold

Community Information

Address	147 Lebovic Campus Drive
Subdivision	Patterson
City	Vaughan (patterson)
Province	Ontario
Postal Code	L6A5A1

Amenities

Amenities	Hospital, Park, Place of Worship, Fireplace(s)
Features	Flat site, Conservation/green belt, Dry, In-Law Suite
Parking Spaces	3
Parking	Garage
# of Garages	1

Interior

Appliances	Central Vacuum, Water Heater - Tankless, Alarm System, Blinds, Cooktop, Dryer, Freezer, Oven, Stove, Washer, Refrigerator
Heating	Natural gas Forced air
Cooling	Central air conditioning
Fireplace	Yes
# of Stories	3
Has Basement	Yes
Basement	Walk out

Exterior

Exterior	Brick, Concrete
Exterior Features	Landscaped
Lot Description	33.9 x 94.2 FT ; END UNIT + WALK OUT + RAVINE
Foundation	Concrete

Listing Details

Listing Office KELLER WILLIAMS REFERRED URBAN REALTY



The trademarks MLS®, Multiple Listing Service® and the associated logos are owned by The Canadian Real Estate Association (CREA) and identify the quality of services provided by real estate professionals who are members of CREA. REALTOR®. Member of CREA and more.

Listing information last updated on October 13th, 2025 at 8:46am PDT