

\$1,099,000 - 135 Mainprize Crescent, East Gwillimbury (mt Albert)

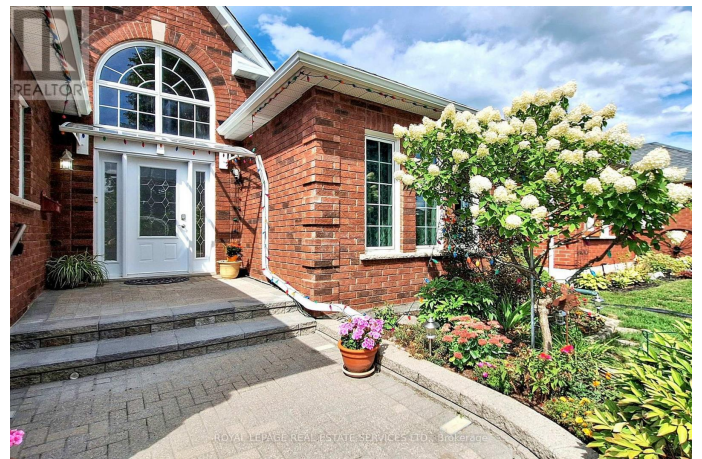
MLS® #N12456591

\$1,099,000

4 Bedroom, 3.00 Bathroom,
Single Family on 0.00 Acres

Mt Albert, East Gwillimbury (mt Albert), Ontario

Fabulous Bungalow On A Quiet-family Friendly Crescent In Mount Albert, Impressive Updates Throughout-spectacular Renovated Kitchen With Floor To Ceiling Cabinetry-pantry-centre Island With Family Sized Breakfast Bar-quartz Counters, Stainless Steel Double Door Fridge-gas Stove-hood Vent, Pot Lights-Undermount Double St Steel Sink-ceramic Floors-marble Tile Backsplash, Modern Primary Bedroom Ensuite Bath With Separate Shower Stall And Self Standing Soaker Tub. Step Into The Inviting-landscaped Back Yard With A Wonderful Heated Inground Pool. A Bright-large -vaulted Ceiling Foyer Welcomes You To This Well Laid Out Home With Spacious Principal Rooms, A Fully Finished Basement Provides Additional Huge Living/entertaining Space, A Large Main Floor Laundry Allows For Side By Side Large Capacity Washer/dryer And Direct Entry From Garage To Home, 9 Ft. Ceilings Throughout The Main Floor, Amazing Neighbourhood Is Within Walking Distance To Parks, School, Library & Community Centre, Nearby Shops, Major Highway Access Within 10-15 Minutes Drive. (id:6289)



Essential Information

Listing #	N12456591
Price	\$1,099,000

Bedrooms	4
Bathrooms	3.00
Acres	0.00
Type	Single Family
Sub-Type	Freehold
Style	Bungalow

Community Information

Address	135 Mainprize Crescent
Subdivision	Mt Albert
City	East Gwillimbury (mt Albert)
Province	Ontario
Postal Code	L0G1M0

Amenities

Amenities	Park, Public Transit, Schools, Fireplace(s)
Features	Irregular lot size, Gazebo
Parking Spaces	6
Parking	Attached Garage, Garage
# of Garages	2
Has Pool	Yes
Pool	Inground pool

Interior

Appliances	Garage door opener remote(s), Central Vacuum, Water Heater, Water softener, Dishwasher, Dryer, Hood Fan, Oven, Stove, Washer, Window Coverings, Refrigerator
Heating	Natural gas Forced air
Cooling	Central air conditioning
Fireplace	Yes
# of Stories	1
Has Basement	Yes

Exterior

Exterior	Brick
Lot Description	49.2 x 132.6 FT ; 50.1 ft. rear, 141.83 ft. E
Foundation	Poured Concrete

Listing Details

Listing Office

ROYAL LEPAGE REAL ESTATE SERVICES LTD.



The trademarks MLS®, Multiple Listing Service® and the associated logos are owned by The Canadian Real Estate Association (CREA) and identify the quality of services provided by real estate professionals who are members of CREA. REALTOR®. Member of CREA and more.

Listing information last updated on October 13th, 2025 at 8:32am PDT