

\$1,129,000 - 15 National Pine Drive, Vaughan (Vellore Village)

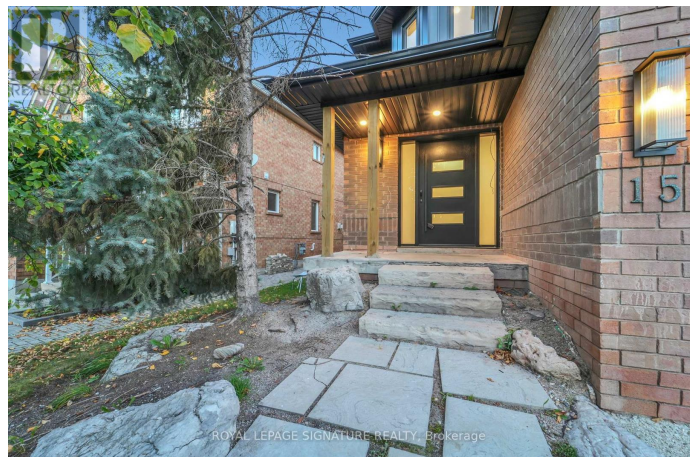
MLS® #N12456226

\$1,129,000

4 Bedroom, 4.00 Bathroom,
Single Family on 0.00 Acres

Vellore Village, Vaughan (Vellore Village),
Ontario

Under Power of Sale - *TURNKEY PROPERTY* Stunning, fully renovated semi-detached home in the heart of Vellore Village, Vaughan! This beautifully updated property offers 4 spacious bedrooms, 4 bathrooms, and 1,761 sq. ft. of above-grade living space. Renovated from top to bottom with modern, premium finishes, smooth ceilings, and pot lights throughout, this home is the perfect blend of style and function. The bright open-concept main floor is ideal for entertaining or everyday living and features a convenient 2-piece bath. The modern kitchen showcases brand-new stainless-steel appliances, elegant cabinetry, and upgraded lighting. Upstairs, you'll find generously sized bedrooms with plenty of natural light. The finished basement extends the living space with a versatile recreation room, full laundry area, and a 2-piece washroom -perfect for family gatherings, a home office, or a media room. Outside, enjoy a private, well-maintained yard ideal for relaxing or entertaining guests. Located in a highly sought-after community close to top-rated schools, parks, shopping, transit, and major highways, this home combines elegance, comfort, and convenience - truly move-in ready with no work required. (id:6289)



Essential Information

Listing #	N12456226
Price	\$1,129,000
Bedrooms	4
Bathrooms	4.00
Half Baths	2
Acres	0.00
Type	Single Family
Sub-Type	Freehold

Community Information

Address	15 National Pine Drive
Subdivision	Vellore Village
City	Vaughan (vellore Village)
Province	Ontario
Postal Code	L6A3M2

Amenities

Amenities	Public Transit, Schools
Features	Carpet Free
Parking Spaces	3
Parking	Garage
# of Garages	1

Interior

Appliances	Dryer, Range, Stove, Washer, Refrigerator
Heating	Electric Forced air
Cooling	Central air conditioning
# of Stories	2
Has Basement	Yes

Exterior

Exterior	Brick, Brick Facing
Lot Description	27.9 x 111.7 FT
Foundation	Concrete

Listing Details

Listing Office	ROYAL LEPAGE SIGNATURE REALTY
----------------	-------------------------------



The trademarks MLS®, Multiple Listing Service® and the associated logos are owned by The Canadian Real Estate Association (CREA) and identify the quality of services provided by real estate professionals who are members of CREA. REALTOR®. Member of CREA and more.

Listing information last updated on October 12th, 2025 at 2:02pm PDT