

\$1,058,000 - 24 - 300 Esna Park Drive, Markham (milliken Mills West)

MLS® #N12455006

\$1,058,000

0 Bedroom, 2.00 Bathroom, 2,000 sqft
Industrial

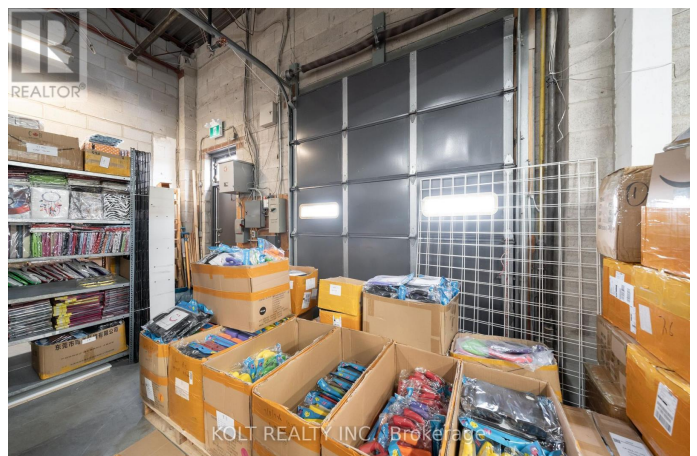
Milliken Mills West, Markham (milliken Mills West), Ontario

Discover business freedom with property ownership in Markham's prime industrial hub with this 2,000 sq. ft. unit available for immediate occupancy. Designed for seamless logistics, this unit accommodates 40' trailers, offers 14' clear height, 60A power, and "EMP-GE" zoning. Vendor options for custom turnkey office build-outs & renovations, the space is easily adaptable to your needs. Great location just five minutes from Highway 404, with quick access to Highways 401 and 407 allowing easy transportation & shipping. Property features ample parking spaces, three site access points & alternative unit options up to 6700 sqft. ****EXTRAS**** Completed property upgrades: New asphalt loading & parking lot, upgraded security cameras, LED exterior lighting, fresh painted shipping & rear access doors. (id:6289)

Essential Information

Listing #	N12455006
Price	\$1,058,000
Bathrooms	2.00
Square Footage	2,000
Type	Industrial

Community Information



Address	24 - 300 Esna Park Drive
Subdivision	Milliken Mills West
City	Markham (milliken Mills West)
Province	Ontario
Postal Code	L3R1H3

Amenities

Amenities	Highway, Public Transit
-----------	-------------------------

Interior

Heating	Natural gas Other
Cooling	Partially air conditioned

Listing Details

Listing Office	KOLT REALTY INC.
----------------	------------------



The trademarks MLS®, Multiple Listing Service® and the associated logos are owned by The Canadian Real Estate Association (CREA) and identify the quality of services provided by real estate professionals who are members of CREA. REALTOR®. Member of CREA and more.

Listing information last updated on October 12th, 2025 at 9:46pm PDT