

\$1,399,900 - 20697 Highway 48 Highway, East Gwillimbury

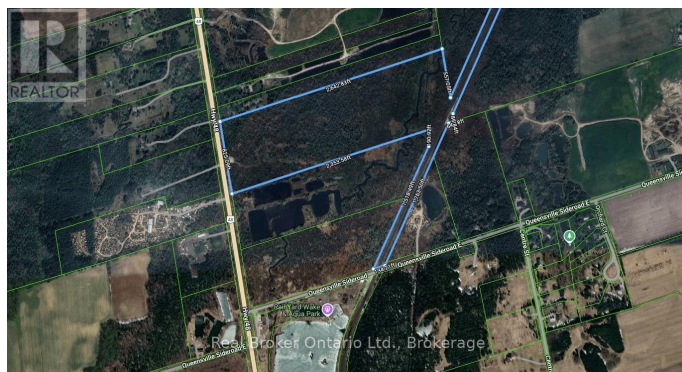
MLS® #N12454061

\$1,399,900

0 Bedroom, 0.00 Bathroom,
Vacant Land on 0.00 Acres

Rural East Gwillimbury, East Gwillimbury,
Ontario

Power of Sale Opportunity! 20697 Highway 48, East Gwillimbury is an exceptional opportunity to acquire approximately 50 acres of level, vacant land with over 824 feet of frontage along Highway 48, just north of Mount Albert. Located west of the railway line, this expansive parcel offers excellent exposure and accessibility. Zoned Rural (RU), the property allows for a wide range of permitted uses including: agricultural and agri-related operations, greenhouses, equestrian facilities, farm produce outlets, nurseries, kennels, on-farm diversified uses, single-detached dwellings, accessory apartments, bed and breakfast establishments, animal clinics, group homes, home child care, and home businesses. It also supports unique lifestyle or entrepreneurial ventures such as agri-tourism and farm implement sales. Ideal for investors, farmers, or those seeking to build a private country estate. Don't miss this rare opportunity to own a large parcel with endless potential in a growing area of East Gwillimbury (id:6289)



Essential Information

Listing #	N12454061
Price	\$1,399,900
Bathrooms	0.00
Acres	0.00

Type Vacant Land

Community Information

Address 20697 Highway 48 Highway
Subdivision Rural East Gwillimbury
City East Gwillimbury
Province Ontario
Postal Code L0G1M0

Amenities

Utilities Electricity
Parking No Garage

Exterior

Lot Description 825 x 2500 FT|25 - 50 acres

Listing Details

Listing Office Real Broker Ontario Ltd.



The trademarks MLS®, Multiple Listing Service® and the associated logos are owned by The Canadian Real Estate Association (CREA) and identify the quality of services provided by real estate professionals who are members of CREA. REALTOR®. Member of CREA and more.

Listing information last updated on October 14th, 2025 at 12:01pm PDT