

# **\$1,499,900 - 90 Maplebank Crescent, Whitchurch-Stouffville (stouffville)**

---

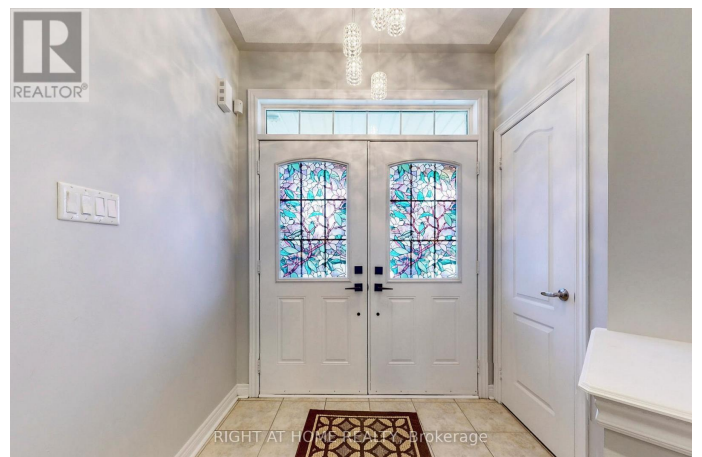
MLS® #N12437762

**\$1,499,900**

6 Bedroom, 5.00 Bathroom,  
Single Family on 0.00 Acres

Stouffville, Whitchurch-Stouffville (stouffville),  
Ontario

Welcome to 90 Maplebank Cres, a beautifully upgraded 6-bedroom, 5-washroom detached home offering approx. 4000 sq ft of living space with professionally finished walkout basement with separate double-door entrance. The main floor features a spacious open-concept layout with combined living/dining, a bright breakfast area, and a family room with gas fireplace and 5-panel bay window. The modern kitchen showcases granite counter tops, a large island with granite surface and upgraded light fixtures, custom granite back splash, and a deep double stainless steel sink with upgraded faucet. Stainless steel appliances include fridge, gas stove, range hood, and dishwasher. The home is painted throughout (including trims and doors), with pot lights inside and out, upgraded light fixtures, and hardwood floors throughout the second floor and main living areas. Carpet free. The stairwell and landing area are lit with pot lights and a chandelier, while the dining area features an extensive chandelier. Smart switches control lighting throughout the home for modern convenience. Upstairs, hardwood floors extend through all bedrooms and hallways. The large primary bedroom offers a walk-in closet and a spa-like en suite with Jacuzzi tub, glass shower, and his & her sinks. The second bedroom features a walk-in closet and semi-en suite. The third and fourth



bedrooms have closets and share a semi-en suite. The bright walkout basement offers 2 spacious bedrooms, a 4-pc bathroom with mosaic wall, modern kitchen with stainless steel appliances, open-concept family/dining area, vinyl flooring throughout, and en suite laundry. The double-door walkout opens to a stone-paved backyard and pathway. Newly Installed modern double garage doors, custom-built shelving, fits 2 cars inside, with parking for 4 more on the no-sidewalk driveway. Located near parks, trails, top-rated schools, and Hwy 404. This beautifully maintained home is a true gem! (id:6289)

**Essential Information**

Listing #	N12437762
Price	\$1,499,900
Bedrooms	6
Bathrooms	5.00
Half Baths	1
Acres	0.00
Type	Single Family
Sub-Type	Freehold

**Community Information**

Address	90 Maplebank Crescent
Subdivision	Stouffville
City	Whitchurch-Stouffville (stouffville)
Province	Ontario
Postal Code	L4A0R8

**Amenities**

Amenities	Park, Schools, Place of Worship, Fireplace(s)
Utilities	Cable, Electricity, Sewer
Features	Flat site, Lighting, Dry, Paved yard, Carpet Free, In-Law Suite
Parking Spaces	6
Parking	Garage
# of Garages	1

## Interior

Appliances	Water Heater, Water softener, Dishwasher, Dryer, Hood Fan, Range, Stove, Two Washers, Window Coverings, Refrigerator
Heating	Natural gas Forced air
Cooling	Central air conditioning
Fireplace	Yes
# of Fireplaces	1
# of Stories	2
Basement	Apartment in basement, Walk out

## Exterior

Exterior	Brick, Stone
Exterior Features	Landscaped
Lot Description	41 x 90 FT
Foundation	Poured Concrete

## Listing Details

Listing Office      RIGHT AT HOME REALTY



The trademarks MLS®, Multiple Listing Service® and the associated logos are owned by The Canadian Real Estate Association (CREA) and identify the quality of services provided by real estate professionals who are members of CREA. REALTOR®. Member of CREA and more.

Listing information last updated on October 15th, 2025 at 11:47am PDT