

\$1,599,000 - 8689 County Rd 1, Adjala-Tosorontio

MLS® #N12298304

\$1,599,000

2 Bedroom, 2.00 Bathroom,
Single Family on 0.00 Acres

Rural Adjala-Tosorontio, Adjala-Tosorontio,
Ontario

Outstanding 63 Acres with views over the Hockley Valley and Escarpment. Approx. 50 acres of workable land. Property is being sold in "As Is" condition. Bank barn, some new fencing. Close to all the Hockley Valley resorts, restaurants, wineries, craft breweries, Bruce Trail, yet only 45 minutes to Pearson International Airport. Please enter any buildings on property at own risk (id:6289)

Essential Information

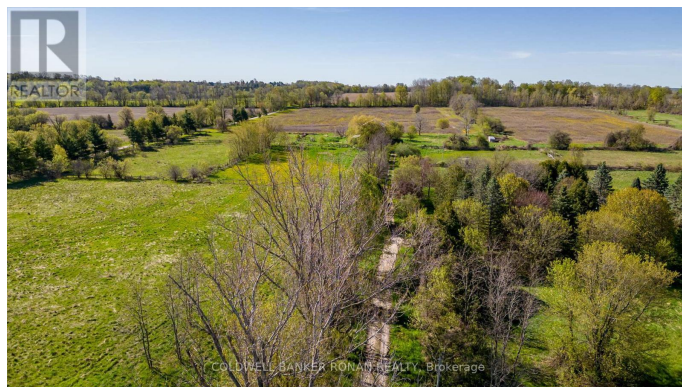
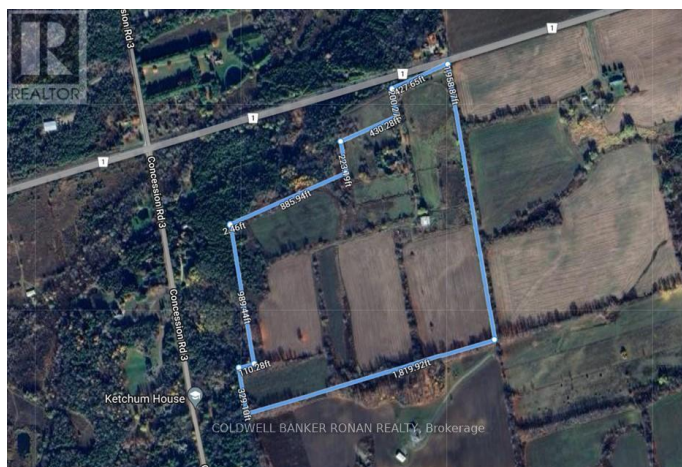
Listing #	N12298304
Price	\$1,599,000
Bedrooms	2
Bathrooms	2.00
Half Baths	1
Acres	0.00
Type	Single Family
Sub-Type	Freehold

Community Information

Address	8689 County Rd 1
Subdivision	Rural Adjala-Tosorontio
City	Adjala-Tosorontio
Province	Ontario
Postal Code	L0G1L0

Amenities

Utilities	Electricity
-----------	-------------



Features	Irregular lot size
Parking Spaces	20
Parking	No Garage
Has Pool	Yes
Pool	Inground pool

Interior

Heating	Electric Baseboard heaters
Fireplace	Yes
# of Stories	2

Exterior

Exterior	Stucco
Lot Description	427.7 x 1541.7 FT ; M/L Irregular / As per GEO 50 - 100 acres
Foundation	Concrete

Listing Details

Listing Office COLDWELL BANKER RONAN REALTY



The trademarks MLS®, Multiple Listing Service® and the associated logos are owned by The Canadian Real Estate Association (CREA) and identify the quality of services provided by real estate professionals who are members of CREA. REALTOR®. Member of CREA and more.

Listing information last updated on October 14th, 2025 at 9:01am PDT