

# \$352,000 - #36 2503 24 St Nw, Edmonton

MLS® #E4461825

**\$352,000**

4 Bedroom, 3.00 Bathroom, 1,172 sqft

Single Family on 0.04 Acres

Silver Berry, Edmonton, Alberta

Suitable for first-time buyers or investors. This half duplex townhouse offers 4 bedrooms, 2.5 bathrooms, a single attached garage, private fenced yard, and a FULLY FINISHED BASEMENT. The main floor features vinyl flooring, laundry/powder room, living room, and kitchen with eating nook. The upper level includes three bedrooms and a full bathroom. The basement adds a bedroom/den, bathroom, and family room. Deck for outdoor use. Conveniently located near Silverberry Park, playground, shopping, Meadows Recreation Centre, and public transit. (id:6289)

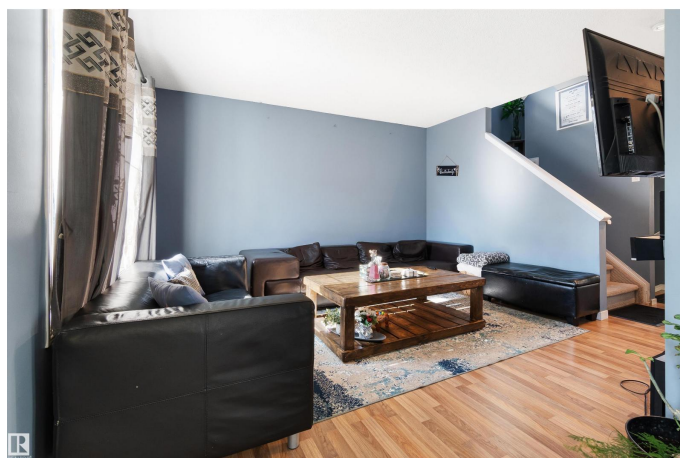
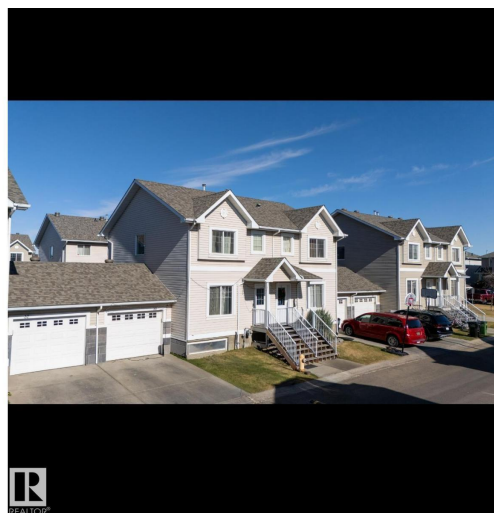
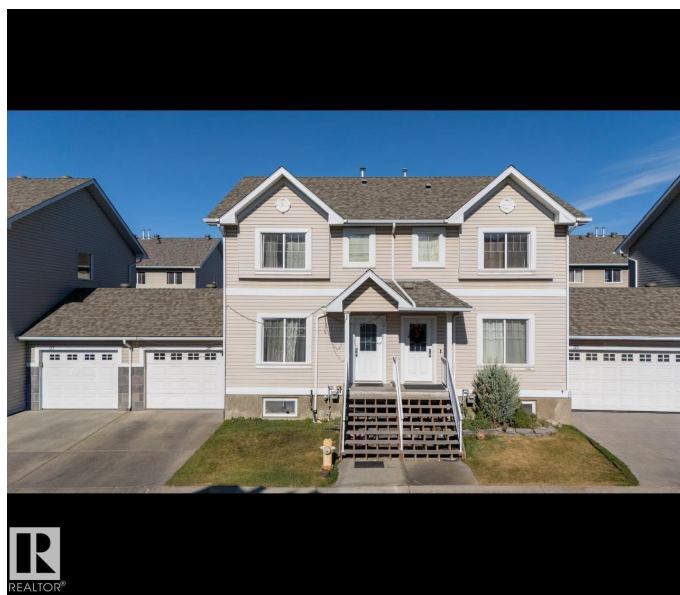
Built in 2006

## Essential Information

Listing #	E4461825
Price	\$352,000
Bedrooms	4
Bathrooms	3.00
Half Baths	1
Square Footage	1,172
Acres	0.04
Year Built	2006
Type	Single Family
Sub-Type	Condominium/Strata

## Community Information

Address	#36 2503 24 St Nw
Subdivision	Silver Berry



City	Edmonton
Province	Alberta
Postal Code	T6T0B5

### Amenities

Amenities	Playground, Public Transit, Schools, Shopping
Features	Park/reserve, No Animal Home, No Smoking Home
Parking	Attached Garage
# of Garages	1

### Interior

Appliances	Dishwasher, Dryer, Garage door opener, Hood Fan, Stove, Washer
Heating	Forced air
# of Stories	2
Has Basement	Yes

### Listing Details

Listing Office	Century 21 Smart Realty
----------------	-------------------------



The trademarks MLS®, Multiple Listing Service® and the associated logos are owned by The Canadian Real Estate Association (CREA) and identify the quality of services provided by real estate professionals who are members of CREA. REALTOR®. Member of CREA and more.

Listing information last updated on October 14th, 2025 at 7:47pm PDT