

\$399,900 - 11455 162 Av Nw, Edmonton

MLS® #E4461788

\$399,900

3 Bedroom, 3.00 Bathroom, 1,238 sqft
Single Family on 0.14 Acres

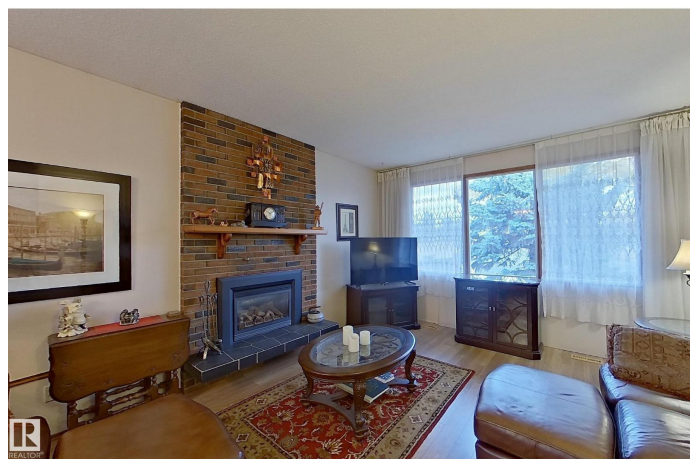
Dunluce, Edmonton, Alberta

Spacious and Solid 1237 sq ft Bungalow located on a good sized lot in Dunluce. Very comfortable home located on bus route, moments to schools, perfect starter home. Front Sunken Living room, formal dining area leads to the eat-in kitchen area. Side window overlooks the Park and School Yard. Three bedrooms upstairs. Master suite features 2 piece ensuite. Back entrance leads to fully finished basement. Large Family Room, Den, 3 piece bathroom & Sauna. Double Attached Garage with exterior door entrance. Fully Fenced yard. Fruit Trees and Space for a wonderful future garden. Some updating required, however extremely solid and priced perfect. Furnace replaced in 2016, Shingles in 2021. Quick Possession (id:6289)

Built in 1977

Essential Information

Listings #	E4461788
Price	\$399,900
Bedrooms	3
Bathrooms	3.00
Half Baths	1
Square Footage	1,238
Acres	0.14
Year Built	1977
Type	Single Family
Sub-Type	Freehold



Style Bungalow

Community Information

Address 11455 162 Av Nw
Subdivision Dunluce
City Edmonton
Province Alberta
Postal Code T5X2L4

Amenities

Features See remarks
Parking Attached Garage
of Garages 1

Interior

Appliances Dishwasher, Refrigerator, Stove, Washer, Dryer
Heating Forced air
of Stories 1
Has Basement Yes

Listing Details

Listing Office Royal LePage Arteam Realty



The trademarks MLS®, Multiple Listing Service® and the associated logos are owned by The Canadian Real Estate Association (CREA) and identify the quality of services provided by real estate professionals who are members of CREA. REALTOR®. Member of CREA and more.

Listing information last updated on October 13th, 2025 at 11:02pm PDT