

\$378,800 - #3003 10180 103 St Nw, Edmonton

MLS® #E4452031

\$378,800

2 Bedroom, 2.00 Bathroom, 725 sqft

Single Family on 0.00 Acres

Downtown (Edmonton), Edmonton, Alberta

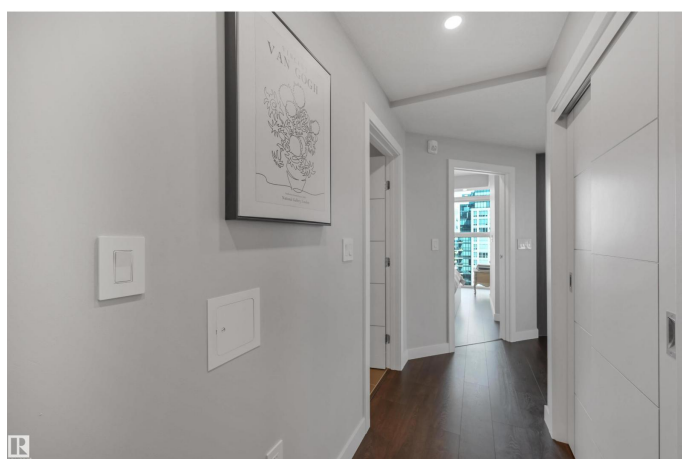
Welcome to Encore Tower, nestled in the heart of downtown Edmonton! This beautiful two-bedroom, two-bathroom unit is move-in ready and boasts stunning views.

Floor-to-ceiling windows offer breathtaking, unobstructed views of Rogers Place & Stantec Tower. The modern kitchen features stainless steel appliances & an island, perfect for entertaining & everyday living. Enjoy a spacious living area with modern finishes, central A/C, & window coverings throughout. Located just steps from the ICE District, top restaurants, cafes, & Rogers Place, youâ€™™ll be at the centre of everything. The unit includes a heated underground parking stall & access to luxury amenities such as a 4th-floor rooftop, a full fitness centre, stylish social rooms, & concierge service for added convenience and security. A must see! (id:6289)

Built in 2020

Essential Information

Listing #	E4452031
Price	\$378,800
Bedrooms	2
Bathrooms	2.00
Square Footage	725
Acres	0.00
Year Built	2020
Type	Single Family



Sub-Type Condominium/Strata

Community Information

Address #3003 10180 103 St Nw
Subdivision Downtown (Edmonton)
City Edmonton
Province Alberta
Postal Code T5J0L1

Amenities

Amenities Playground, Public Transit, Schools, Shopping, Ceiling - 9ft
Features Paved lane
Parking Underground
View City view

Interior

Appliances Dishwasher, Dryer, Garage door opener remote(s), Garage door opener,
Microwave Range Hood Combo, Refrigerator, Stove, Washer, Window
Coverings
Heating Forced air

Listing Details

Listing Office RE/MAX Elite



The trademarks MLS®, Multiple Listing Service® and the associated logos are owned by The Canadian Real Estate Association (CREA) and identify the quality of services provided by real estate professionals who are members of CREA. REALTOR®. Member of CREA and more.

Listing information last updated on October 13th, 2025 at 8:01am PDT