

# \$300,000 - 5935 189 St Nw, Edmonton

MLS® #E4451638

## \$300,000

3 Bedroom, 3.00 Bathroom, 1,245 sqft

Single Family on 0.11 Acres

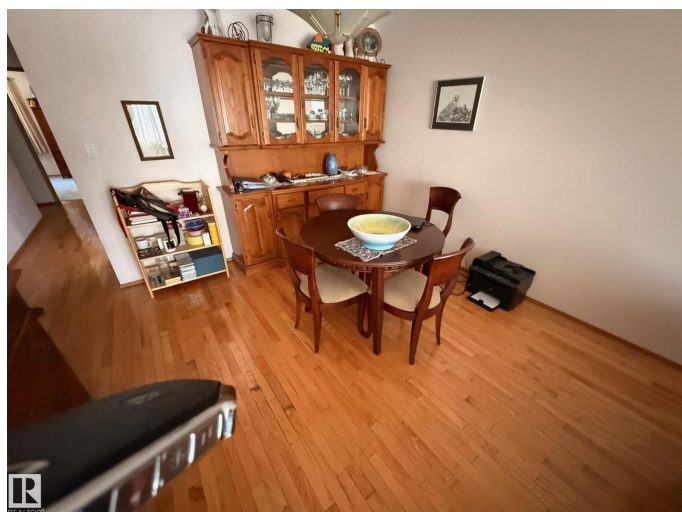
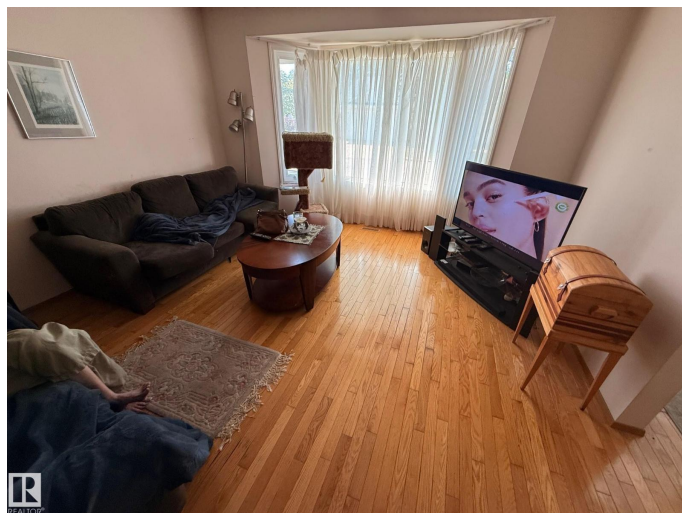
Jamieson Place, Edmonton, Alberta

Large bungalow townhome in well kept Adult only complex. This nice size home is perfect for anyone wanting the quiet life in a convenient west Edmonton location. Main level features a living room upon entry and leads to your dining area and kitchen. Kitchen has patio door access to your private deck that backs a green space. 2 bedrooms on the main level including a large primary with walk-in closet and 4 piece ensuite bath. Second bedroom is also a good size and perfect for a home office or guest room. Finishing off the main level is laundry room and a 3 piece bath. The basement is also fully finished with another bedroom, 3 piece bath and a huge family room, great for entertaining. Oversize single attached garage and visitor parking right outside your door. Property being sold as is, where is. Schedule A must accompany all offers. (id:6289)

Built in 1989

## Essential Information

Listing #	E4451638
Price	\$300,000
Bedrooms	3
Bathrooms	3.00
Square Footage	1,245
Acres	0.11
Year Built	1989
Type	Single Family



Sub-Type	Condominium/Strata
Style	Bungalow

### Community Information

Address	5935 189 St Nw
Subdivision	Jamieson Place
City	Edmonton
Province	Alberta
Postal Code	T6M2J2

### Amenities

Amenities	Public Transit, Shopping
Features	No back lane, No Smoking Home
Parking Spaces	2
Parking	Attached Garage, Oversize
# of Garages	1

### Interior

Appliances	See remarks
Heating	Forced air
Fireplace	Yes
Fireplaces	Gas
# of Stories	1
Has Basement	Yes

### Listing Details

Listing Office	Century 21 Masters
----------------	--------------------



The trademarks MLS®, Multiple Listing Service® and the associated logos are owned by The Canadian Real Estate Association (CREA) and identify the quality of services provided by real estate professionals who are members of CREA. REALTOR®. Member of CREA and more.

Listing information last updated on October 13th, 2025 at 1:46am PDT