

\$579,000 - 4960 191 St Nw, Edmonton

MLS® #E4449310

\$579,000

4 Bedroom, 4.00 Bathroom, 1,941 sqft
Single Family on 0.12 Acres

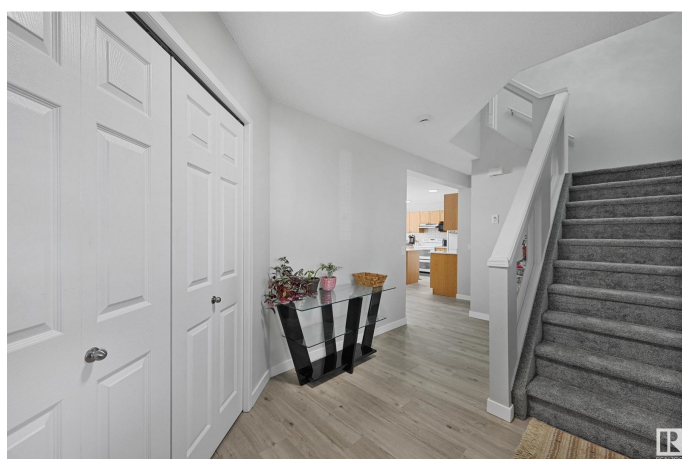
Jamieson Place, Edmonton, Alberta

Welcome to Jamieson Place! This updated 2-storey home has 1940 sq. ft. and backs onto a green space with no neighbors behind. Inside, you'll find a spacious entry, fresh paint, new lighting, carpet, and vinyl plank flooring on the main level. The kitchen features newer quartz counters, a double oven stove, and a huge pantry. The dining area overlooks the yard, and the living room has a cozy fireplace perfect for relaxing evenings. There's a convenient half bath and main floor laundry too. Upstairs, a bright bonus room with built-in window seating is great for reading or chilling. You'll also find 3 bedrooms, including a large primary with a walk-in closet, make-up vanity, and jetted tub. The finished basement adds a 4th bedroom, modern bathroom, lots of storage, and a big rec area. Outside, enjoy a front porch, a deck for BBQs, and a private yard with walking trails nearby. Plus, a double attached garage rounds out this move-in ready home! (id:6289)

Built in 2003

Essential Information

Listings #	E4449310
Price	\$579,000
Bedrooms	4
Bathrooms	4.00
Half Baths	1
Square Footage	1,941



Acres	0.12
Year Built	2003
Type	Single Family
Sub-Type	Freehold

Community Information

Address	4960 191 St Nw
Subdivision	Jamieson Place
City	Edmonton
Province	Alberta
Postal Code	T6M2T8

Amenities

Amenities	Park
Features	See remarks, Flat site, No back lane, Level
Parking	Attached Garage
# of Garages	1
View	City view

Interior

Appliances	Dishwasher, Dryer, Hood Fan, Refrigerator, Stove, Washer
Heating	Forced air
# of Stories	2
Has Basement	Yes

Listing Details

Listing Office	Exp Realty
----------------	------------



The trademarks MLS®, Multiple Listing Service® and the associated logos are owned by The Canadian Real Estate Association (CREA) and identify the quality of services provided by real estate professionals who are members of CREA. REALTOR®. Member of CREA and more.

Listing information last updated on October 14th, 2025 at 3:16pm PDT