

\$239,800 - #117 226 Macewan Road Sw Sw, Edmonton

MLS® #E4449252

\$239,800

2 Bedroom, 2.00 Bathroom, 891 sqft
Single Family

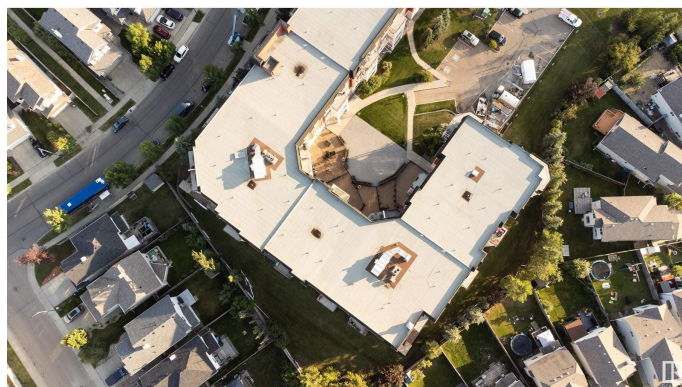
Macewan, Edmonton, Alberta

MAIN LEVEL , NO UTILITY BILLS, 2 PARKING , with Stunning GREEN SPACE VIEW! Bright and spacious, this beautifully updated unit offers 2 beds, 2 baths and an oversized kitchen with in-suite laundry and ample storage space. Enjoy 9-ft ceilings, an open-concept layout and expansive windows that flood the space with natural light and showcase peaceful views of the green space. Newer fresh neutral paint throughout. Condo fees cover all utilities: heat, water, and electricity! This well-managed, pet-friendly UNIT includes 1 secure titled heated underground parking and 1 titled stall parking , lots of visitor/street parking, a fitness room and a large party room for your private gatherings and a open space courtyard . Located right across from a park & playground, just minutes from shopping, dining, schools, daycare, the Anthony Henday, LRT, and bus routes â€” perfect for families and professionals. Donâ€™t miss your chance to own this hidden gem! (id:6289)

Built in 2005

Essential Information

Listing #	E4449252
Price	\$239,800
Bedrooms	2
Bathrooms	2.00
Square Footage	891



Year Built	2005
Type	Single Family
Sub-Type	Condominium/Strata

Community Information

Address	#117 226 Macewan Road Sw Sw
Subdivision	Macewan
City	Edmonton
Province	Alberta
Postal Code	T6W0C5

Amenities

Amenities	Airport, Ceiling - 9ft
Parking	Heated Garage, Stall, Underground

Interior

Appliances	Dishwasher, Dryer, Garage door opener, Microwave Range Hood Combo, Refrigerator, Washer/Dryer Stack-Up, Stove, Washer
Heating	Baseboard heaters

Listing Details

Listing Office	MaxWell Devonshire Realty
----------------	---------------------------



The trademarks MLS®, Multiple Listing Service® and the associated logos are owned by The Canadian Real Estate Association (CREA) and identify the quality of services provided by real estate professionals who are members of CREA. REALTOR®. Member of CREA and more.

Listing information last updated on October 12th, 2025 at 9:01pm PDT