

\$329,900 - #43 14428 Miller Bv Nw, Edmonton

MLS® #E4449215

\$329,900

2 Bedroom, 2.00 Bathroom, 1,107 sqft

Single Family

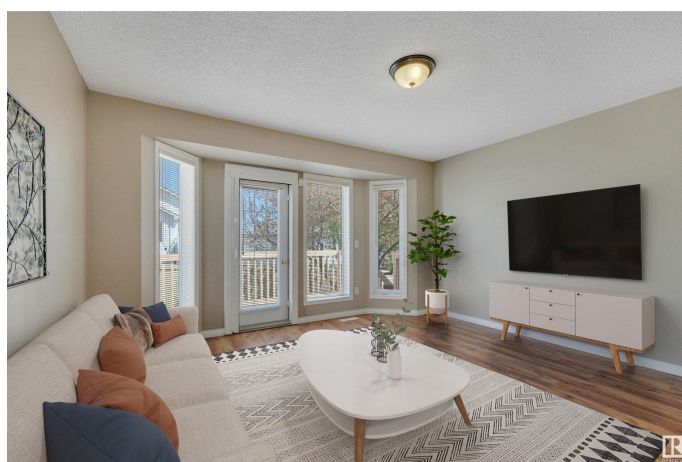
Miller, Edmonton, Alberta

This bright and beautifully maintained half-duplex bungalow with attached double garage is situated in the sought after 55+ adults-only community, Miller Garden Estates. The open concept main floor features all that you need, including a large kitchen with pantry and ample counter space, a dining area, spacious living room, main floor laundry, along with 2 bedrooms and 2 full baths. The rear deck with built-in BBQ line makes entertaining a breeze. Relax in your primary bedroom with bay window, ensuite, and large walk-in closet. The unfinished basement offers a brand new hot water tank and large flex space for storage or large family gatherings. Easy access to the Anthony Henday, public transit, Clareview Recreation Centre, walking paths, and many shops and restaurants. You'll be close to all the action! Pet policy: up to 2 animals under 15 at the shoulder. Current condo fees only \$395/mo. (id:6289)

Built in 1999

Essential Information

Listing #	E4449215
Price	\$329,900
Bedrooms	2
Bathrooms	2.00
Square Footage	1,107
Year Built	1999
Type	Single Family



Sub-Type	Condominium/Strata
Style	Bungalow

Community Information

Address	#43 14428 Miller Bv Nw
Subdivision	Miller
City	Edmonton
Province	Alberta
Postal Code	T5Y2Y6

Amenities

Amenities	Public Transit, Shopping
Features	No Smoking Home
Parking Spaces	4
Parking	Attached Garage
# of Garages	1

Interior

Appliances	Dishwasher, Dryer, Garage door opener remote(s), Garage door opener, Hood Fan, Refrigerator, Stove, Washer, Window Coverings
Heating	Forced air
# of Stories	1

Listing Details

Listing Office	Century 21 Masters
----------------	--------------------



The trademarks MLS®, Multiple Listing Service® and the associated logos are owned by The Canadian Real Estate Association (CREA) and identify the quality of services provided by real estate professionals who are members of CREA. REALTOR®. Member of CREA and more.

Listing information last updated on October 13th, 2025 at 6:02am PDT