

# \$469,999 - 450 Crystal Creek Link, Leduc

MLS® #E4449060

**\$469,999**

4 Bedroom, 3.00 Bathroom, 1,646 sqft  
Single Family

Crystal Creek\_LEDU, Leduc, Alberta

Step into this beautifully designed home featuring 4 BEDROOMS & 3 SPACIOUS BATHROOMS, offering plenty of room for the whole family. The main floor boasts an open-concept layout with a bright living space, modern kitchen, and a full bathroom – perfect for guests or multigenerational living. Upstairs, enjoy a spacious primary suite with walk-in closet and private ensuite, plus 3 additional bedrooms and another full bath. Outside, the double detached garage provides ample parking and storage space. Located in a family-friendly neighborhood close to parks, schools, and all major amenities – this home checks all the boxes! (id:6289)

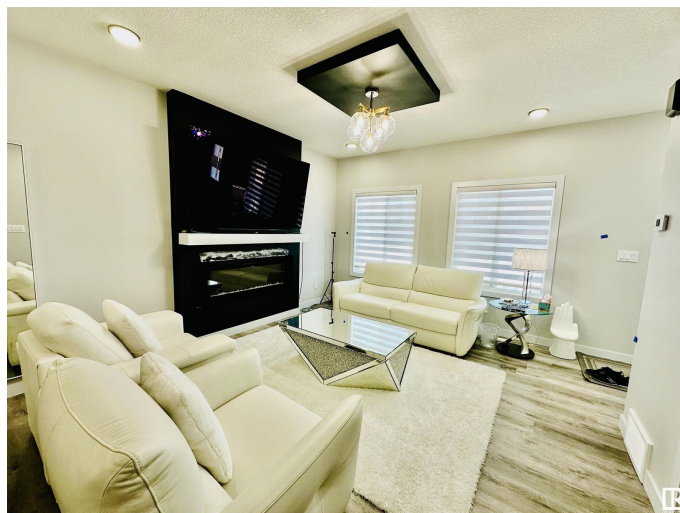
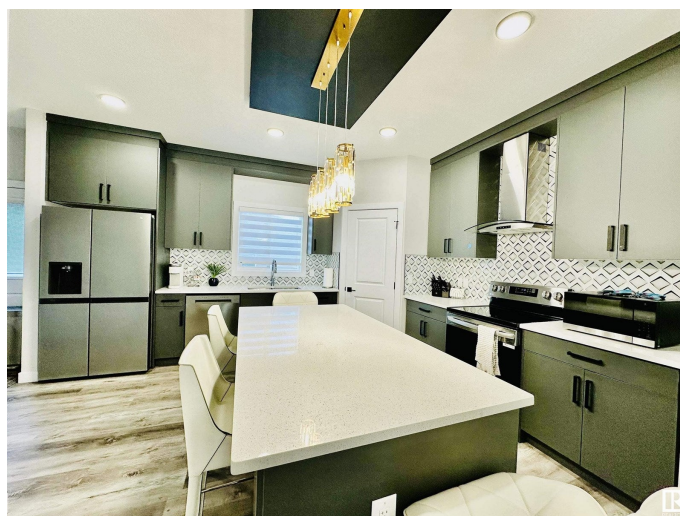
Built in 2025

## Essential Information

Listing #	E4449060
Price	\$469,999
Bedrooms	4
Bathrooms	3.00
Square Footage	1,646
Year Built	2025
Type	Single Family
Sub-Type	Freehold

## Community Information

Address	450 Crystal Creek Link
Subdivision	Crystal Creek_LEDU



City	Leduc
Province	Alberta
Postal Code	T9E1N3

### Amenities

Amenities	Airport, Playground, Schools, Shopping, Ceiling - 9ft
Features	See remarks, Park/reserve, No Animal Home, No Smoking Home
Parking	Detached Garage
# of Garages	1

### Interior

Appliances	Hood Fan
Heating	Forced air
# of Stories	2

### Listing Details

Listing Office	Century 21 All Stars Realty Ltd
----------------	---------------------------------



The trademarks MLS®, Multiple Listing Service® and the associated logos are owned by The Canadian Real Estate Association (CREA) and identify the quality of services provided by real estate professionals who are members of CREA. REALTOR®. Member of CREA and more.

Listing information last updated on October 13th, 2025 at 1:46am PDT