

\$244,900 - #312 9820 165 St Nw, Edmonton

MLS® #E4448979

\$244,900

2 Bedroom, 2.00 Bathroom, 1,098 sqft
Single Family on 0.02 Acres

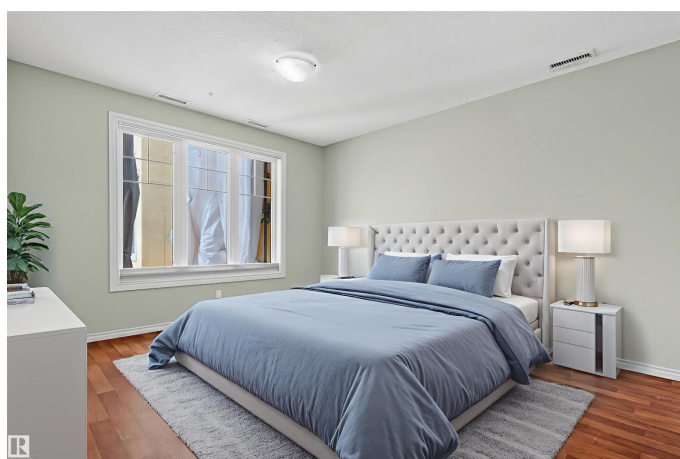
Glenwood (Edmonton), Edmonton, Alberta

Welcome to Unit 312 at The Vanier, an exceptional 2-bedroom + Den, 2-bathroom condo in one of Edmonton's premier adult living communities. Ideally located just 2.5 km from the Misericordia Community Hospital, and close to public transit and shopping. This south-facing unit offers a bright, sunny balcony that overlooks the beautifully landscaped courtyard. Thoughtfully designed for accessibility, the building includes features suitable for wheelchairs, walkers, or scooters. Residents enjoy a strong sense of community, with shared spaces including a social room, library, puzzle room, fitness centre, and a warm, welcoming lobby perfect for visiting with neighbours. Inside the unit, you'll find a spacious, wheelchair-friendly kitchen with well-maintained appliances and high-end, non-slip cushioned lino flooring that's gentle on the joints. The building is also pet-friendly with board approval, and the unit offers 2 titled parking stalls, one being outside. (id:6289)

Built in 2008

Essential Information

Listing #	E4448979
Price	\$244,900
Bedrooms	2
Bathrooms	2.00
Square Footage	1,098



Acres	0.02
Year Built	2008
Type	Single Family
Sub-Type	Condominium/Strata

Community Information

Address	#312 9820 165 St Nw
Subdivision	Glenwood (Edmonton)
City	Edmonton
Province	Alberta
Postal Code	T5P0N3

Amenities

Amenities	Ceiling - 9ft
Features	No Smoking Home
Parking Spaces	2
Parking	Heated Garage, Underground

Interior

Appliances	Dishwasher, Dryer, Microwave Range Hood Combo, Refrigerator, Stove, Washer
Heating	Coil Fan

Listing Details

Listing Office	Liv Real Estate
----------------	-----------------



The trademarks MLS®, Multiple Listing Service® and the associated logos are owned by The Canadian Real Estate Association (CREA) and identify the quality of services provided by real estate professionals who are members of CREA. REALTOR®. Member of CREA and more.

Listing information last updated on October 13th, 2025 at 6:01pm PDT