

\$398,895 - 310 Hawthorn Wy, Leduc

MLS® #E4448886

\$398,895

3 Bedroom, 3.00 Bathroom, 1,383 sqft
Single Family

Woodbend, Leduc, Alberta

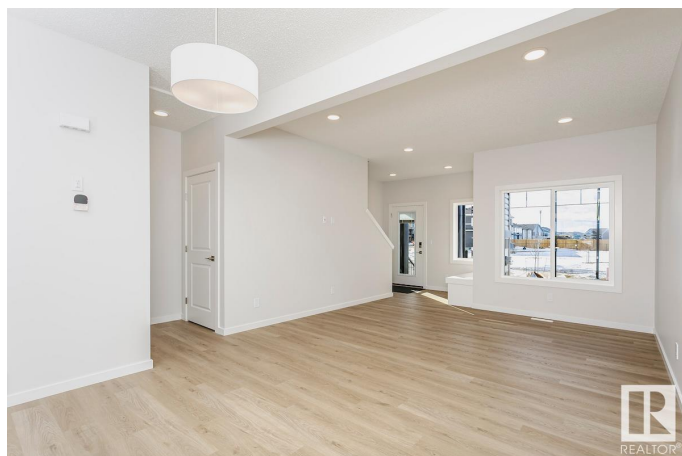
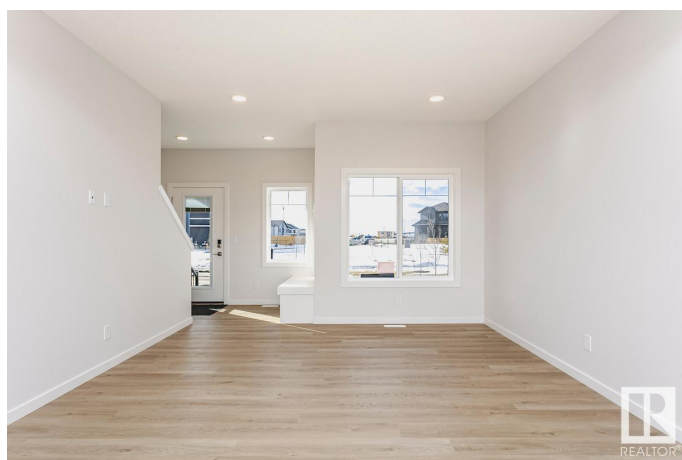
New built townhome by reputable builder. No Condo Fees! Open concept, 9'™ ceilings, with oversized windows that provide plenty of natural light. Contemporary finishes include soft-close cabinetry with 41"• uppers, quartz countertops, and luxury vinyl plank flooring. MDF Bench with hooks at the front entrance. Laundry room conveniently located on the second level. Rear detached double garage with a concrete driveway provides parking for 4 vehicles. Includes smart home technology system (Smart Home Hub), Ecobee thermostat, video doorbell & Weiser Wi-Fi Smart keyless lock with touch screen. Upgraded Panel, Box, & Breaker to 200 Amp Service. (id:6289)

Built in 2025

Essential Information

Listing #	E4448886
Price	\$398,895
Bedrooms	3
Bathrooms	3.00
Half Baths	1
Square Footage	1,383
Year Built	2025
Type	Single Family
Sub-Type	Freehold

Community Information



Address	310 Hawthorn Wy
Subdivision	Woodbend
City	Leduc
Province	Alberta
Postal Code	T9E0B1

Amenities

Amenities	Airport, Golf Course, Playground, Public Transit, Schools, Shopping, Ceiling - 9ft
Features	See remarks, Park/reserve, No Animal Home, No Smoking Home
Parking Spaces	4
Parking	Detached Garage
# of Garages	1

Interior

Heating	Forced air
# of Stories	2

Listing Details

Listing Office	Bode
----------------	------



The trademarks MLS®, Multiple Listing Service® and the associated logos are owned by The Canadian Real Estate Association (CREA) and identify the quality of services provided by real estate professionals who are members of CREA. REALTOR®. Member of CREA and more.

Listing information last updated on October 13th, 2025 at 1:01am PDT