

\$272,000 - 11536 83 St Nw, Edmonton

MLS® #E4447785

\$272,000

3 Bedroom, 2.00 Bathroom, 964 sqft
Single Family

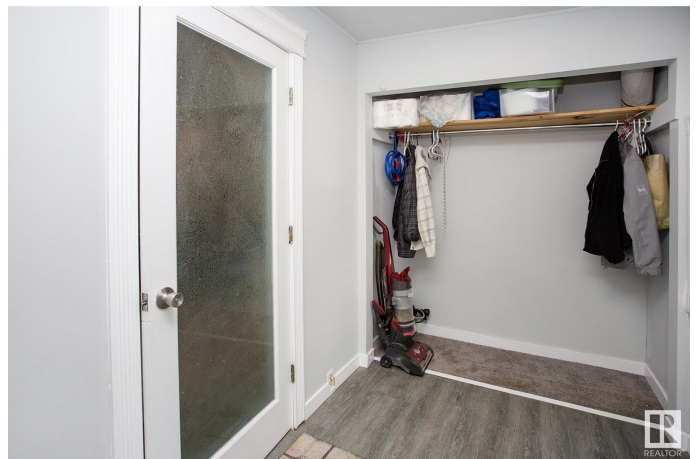
Parkdale (Edmonton), Edmonton, Alberta

Welcome to this beautifully updated bungalow, nestled on a charming tree-lined street! This fully finished home offers 2 spacious bedrooms on the main floor, with the potential for 2 additional bedrooms in the basementâ€”perfect for growing families or guests. There is a full bathroom on the main floor as well as in the basement. Step inside to an inviting open concept layout, where the kitchen seamlessly flows into the dining and living areas, creating a bright and functional space ideal for entertaining. Enjoy outdoor living on the back deck overlooking the fully fenced yard, offering privacy and room to relax. The property also features an oversized insulated double garage plus an extra parking pad for added convenience. With tasteful updates throughout (newer windows, roof, furnace, flooring) and top-to-bottom finishing, this home is move-in ready and waiting for you. Great neighbors. (id:6289)

Built in 1912

Essential Information

Listing #	E4447785
Price	\$272,000
Bedrooms	3
Bathrooms	2.00
Square Footage	964
Year Built	1912
Type	Single Family



Sub-Type	Freehold
Style	Bungalow

Community Information

Address	11536 83 St Nw
Subdivision	Parkdale (Edmonton)
City	Edmonton
Province	Alberta
Postal Code	T5B2Y5

Amenities

Amenities	Public Transit, Schools, Shopping
Features	Flat site, Lane, Closet Organizers
Parking	Detached Garage, Oversize
# of Garages	1

Interior

Appliances	Dishwasher, Dryer, Hood Fan, Refrigerator, Gas stove(s), Washer, Window Coverings
Heating	Forced air
# of Stories	1
Has Basement	Yes

Listing Details

Listing Office	RE/MAX Real Estate
----------------	--------------------



The trademarks MLS®, Multiple Listing Service® and the associated logos are owned by The Canadian Real Estate Association (CREA) and identify the quality of services provided by real estate professionals who are members of CREA. REALTOR®. Member of CREA and more.

Listing information last updated on October 14th, 2025 at 2:16am PDT