

\$257,900 - #138 308 Ambleside Link Li Sw, Edmonton

MLS® #E4447644

\$257,900

2 Bedroom, 2.00 Bathroom, 990 sqft

Single Family on 0.02 Acres

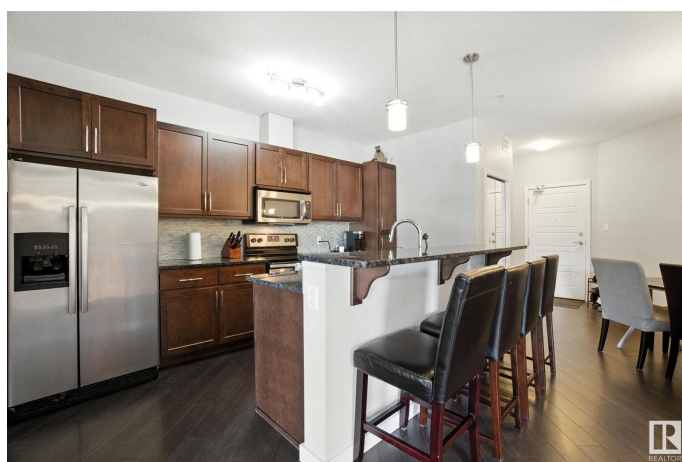
Ambleside, Edmonton, Alberta

Enjoy carefree living with this 2 bedroom, 2 bathroom home in Ambleside. No yardwork; no snow removal; no exterior maintenance. Which means you get more free time; predictable costs; access to amenities including a gym and guest suite; more social opportunities. L'Attitude Studios is just minutes away from the Currents at Windermere featuring great restaurants, prime retailers and amazing food shopping options. The moment you step inside, you'll see that this is no cookie-cutter condo. There is a nicely finished kitchen featuring wood cabinets, granite counters and stainless steel appliances with a good sized eating area. The living room is perfect for putting your feet up after a tiring day. There are 2 bedrooms including the primary with large windows and an ensuite boasting a granite counter top, 2 sinks and walk-in closet. A unique feature is the patio overlooking a quiet street. It has a gate which allows easy access for friends visiting or unloading the car. Included are 2 titled parking stalls. (id:6289)

Built in 2011

Essential Information

Listing #	E4447644
Price	\$257,900
Bedrooms	2
Bathrooms	2.00



Square Footage	990
Acres	0.02
Year Built	2011
Type	Single Family
Sub-Type	Condominium/Strata

Community Information

Address	#138 308 Ambleside Link Li Sw
Subdivision	Ambleside
City	Edmonton
Province	Alberta
Postal Code	T6W0V3

Amenities

Amenities	Airport, Golf Course, Playground, Public Transit, Schools, Shopping
Features	Flat site, No Animal Home, No Smoking Home
Parking Spaces	2
Parking	Heated Garage, Parkade, Stall, Underground

Interior

Appliances	Dishwasher, Dryer, Hood Fan, Microwave Range Hood Combo, Refrigerator, Stove, Washer, Window Coverings
Heating	Hot water radiator heat

Listing Details

Listing Office	RE/MAX Real Estate
----------------	--------------------



The trademarks MLS®, Multiple Listing Service® and the associated logos are owned by The Canadian Real Estate Association (CREA) and identify the quality of services provided by real estate professionals who are members of CREA. REALTOR®. Member of CREA and more.

Listing information last updated on October 14th, 2025 at 11:46pm PDT