

\$229,900 - #1325 9363 Simpson Dr Nw, Edmonton

MLS® #E4446055

\$229,900

2 Bedroom, 2.00 Bathroom, 1,280 sqft

Single Family on 0.03 Acres

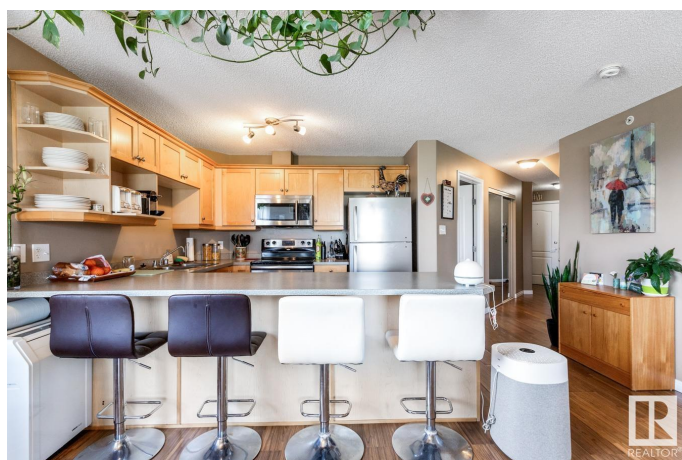
South Terwillegar, Edmonton, Alberta

Tucked into the super desirable community of South Terwillegar, this 1,280 sq ft two-storey is bright, open, and ready to impress. The vaulted 18-ft ceilings make the whole place feel airy and full of natural light. On the main floor, youâ€™ll find a roomy primary bedroom with walk-in closet and a private 4-piece ensuite, plus a second bedroom and another full bathâ€”perfect for guests, roommates, or a home office setup. Head upstairs to a spacious open loft overlooking the living roomâ€”ideal for a workspace, home gym, or extra lounge area. Youâ€™ve also got newly installed flooring throughout the main floor, stainless steel appliances, in-suite laundry, and loads of storage. The sunny south west-facing balcony is perfect for morning coffee or winding down in the evening. Comes with a titled parking stall and easy access to the Henday, transit, shopping, and more. Whether youâ€™re a first- (id:6289)

Built in 2008

Essential Information

Listing #	E4446055
Price	\$229,900
Bedrooms	2
Bathrooms	2.00
Square Footage	1,280
Acres	0.03
Year Built	2008



Type	Single Family
Sub-Type	Condominium/Strata

Community Information

Address	#1325 9363 Simpson Dr Nw
Subdivision	South Terwillegar
City	Edmonton
Province	Alberta
Postal Code	T6R0N2

Amenities

Amenities	Playground, Public Transit, Schools, Shopping
Features	Recreational
Parking	Stall

Interior

Appliances	Dishwasher, Dryer, Microwave Range Hood Combo, Refrigerator, Stove, Washer, Window Coverings
Heating	In Floor Heating

Listing Details

Listing Office	RE/MAX Elite
----------------	--------------



The trademarks MLS®, Multiple Listing Service® and the associated logos are owned by The Canadian Real Estate Association (CREA) and identify the quality of services provided by real estate professionals who are members of CREA. REALTOR®. Member of CREA and more.

Listing information last updated on October 14th, 2025 at 2:01am PDT