

\$249,000 - #450 11517 Ellerslie Rd Sw, Edmonton

MLS® #E4445906

\$249,000

2 Bedroom, 2.00 Bathroom, 876 sqft

Single Family on 0.02 Acres

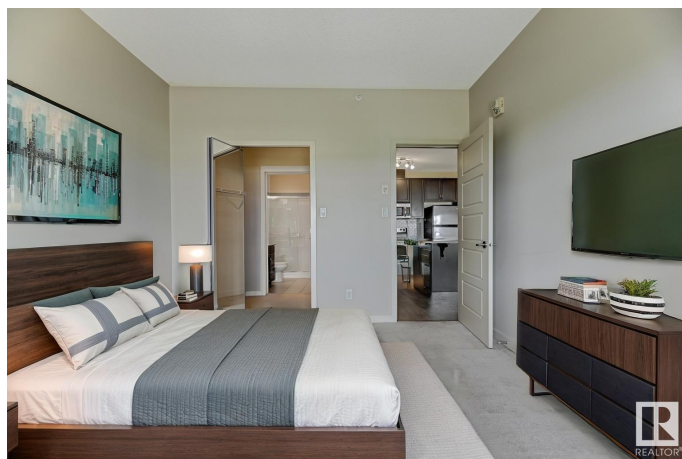
Rutherford (Edmonton), Edmonton, Alberta

Enjoy downtown views and effortless living in this Top Floor 876 sq ft condo with 9 ft. ceilings at Rutherford Gate! Featuring 2 bedrooms and 2 full baths, this bright and freshly painted unit offers an open-concept layout with a stylish kitchen, stainless steel appliances, ample cabinetry, and durable laminate flooring throughout. The spacious primary bedroom includes a walk-through closet and private ensuite, while the second bedroom is perfect for guests or a home office. Additional perks include in-suite laundry, titled underground parking with a secure storage cage, plus building amenities like a social room, fitness centre, guest suite, and visitor parking. Well-managed complex in a prime location close to Anthony Henday, South Edmonton Common, and within walking distance to transit, banks, shopping, and coffee shops. A perfect blend of comfort, quality, and convenience. Don't miss out on this fantastic home! (id:6289)

Built in 2011

Essential Information

Listing #	E4445906
Price	\$249,000
Bedrooms	2
Bathrooms	2.00
Square Footage	876
Acres	0.02



Year Built	2011
Type	Single Family
Sub-Type	Condominium/Strata

Community Information

Address	#450 11517 Ellerslie Rd Sw
Subdivision	Rutherford (Edmonton)
City	Edmonton
Province	Alberta
Postal Code	T6W2A9

Amenities

Amenities	Airport, Golf Course, Public Transit, Schools, Shopping, Ceiling - 9ft
Parking Spaces	1
Parking	Underground

Interior

Appliances	Dishwasher, Dryer, Refrigerator, Stove, Washer, Window Coverings
Heating	Hot water radiator heat

Listing Details

Listing Office	Exp Realty
----------------	------------



The trademarks MLS®, Multiple Listing Service® and the associated logos are owned by The Canadian Real Estate Association (CREA) and identify the quality of services provided by real estate professionals who are members of CREA. REALTOR®. Member of CREA and more.

Listing information last updated on October 14th, 2025 at 1:46pm PDT