

# \$209,900 - 55209 Rr 35, Rural Lac Ste. Anne County

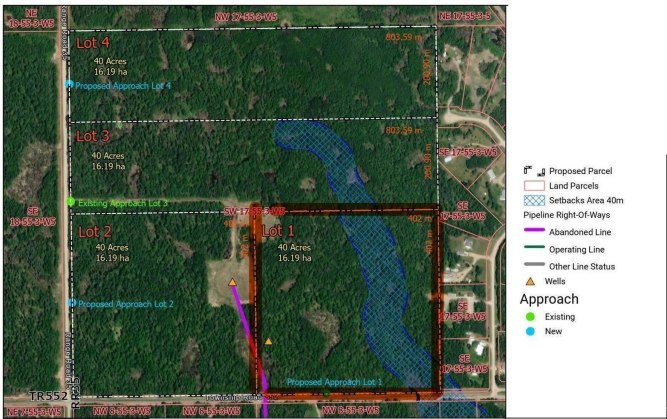
MLS® #E4445418

**\$209,900**

0 Bedroom, 0.00 Bathroom,  
Vacant Land on 39.98 Acres

None, Rural Lac Ste. Anne County, Alberta

Dream property one mile away from Lac St. Anne Lake. 39.98 acres mostly treed very private. Great location close to highway 43 and Ross Haven. Build a cabin, build a house or make a recreational area. Close to the lake which has great all year round fishing. Sky is the limit. Vendor financing is available (id:6289)



## Essential Information

Listing #	E4445418
Price	\$209,900
Bathrooms	0.00
Acres	39.98
Type	Vacant Land

## Community Information

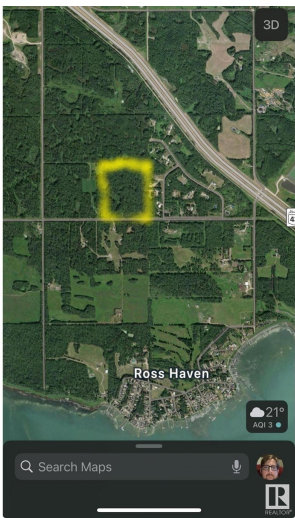
Address	55209 Rr 35
Subdivision	None
City	Rural Lac Ste. Anne County
Province	Alberta
Postal Code	T0E1A0

## Amenities

Features	Private setting, Treed
----------	------------------------

## Listing Details

Listing Office	Exp Realty
----------------	------------



The trademarks MLS®, Multiple Listing Service® and the associated logos are owned by The Canadian Real Estate Association (CREA) and identify the quality of services provided by real estate professionals who are members of CREA. REALTOR®. Member of CREA and more.

Listing information last updated on October 14th, 2025 at 9:16am PDT