

\$245,000 - 10d Twin Tc Nw, Edmonton

MLS® #E4445395

\$245,000

3 Bedroom, 2.00 Bathroom, 1,030 sqft
Single Family on 0.06 Acres

Tweddle Place, Edmonton, Alberta

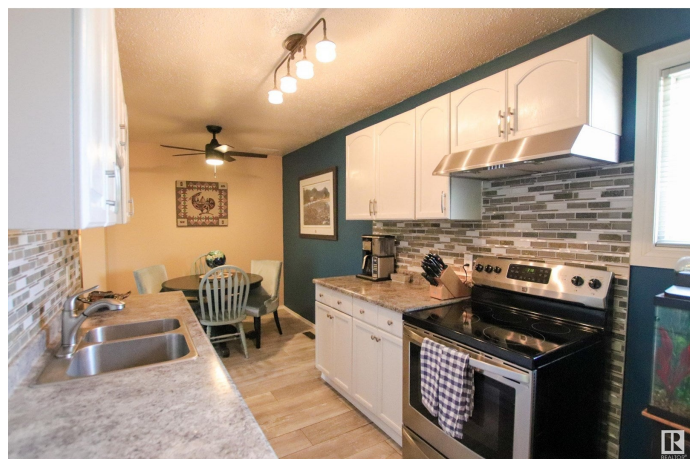
Immediate walking in to the yard you will be impressed by pride of ownership from the very private little oasis that has been made to walking through this home. The main floor has new vinyl plank flooring throughout. The kitchen has been updated from cabinets, backsplash & appliance. The living & dining area are spaces & great for entertaining. An updated 2pc powder room finish the main floor. While the upper level features three good sized bedrooms & a stunning updated 4pc main bath. The basement level is about 90% developed and hosts a large family/ rec room and the laundry/utility room. Make this perfect little home in Twin Terrace yours!
(id:6289)

Built in 1975

Essential Information

Listing #	E4445395
Price	\$245,000
Bedrooms	3
Bathrooms	2.00
Half Baths	1
Square Footage	1,030
Acres	0.06
Year Built	1975
Type	Single Family
Sub-Type	Condominium/Strata

Community Information



Address	10d Twin Tc Nw
Subdivision	Tweddle Place
City	Edmonton
Province	Alberta
Postal Code	T6K1V4

Amenities

Amenities	Playground, Public Transit, Schools, Shopping
Parking	Stall

Interior

Appliances	Dishwasher, Dryer, Hood Fan, Refrigerator, Stove, Washer
Heating	Forced air
# of Stories	2
Has Basement	Yes

Listing Details

Listing Office	2% Realty Pro
----------------	---------------



The trademarks MLS®, Multiple Listing Service® and the associated logos are owned by The Canadian Real Estate Association (CREA) and identify the quality of services provided by real estate professionals who are members of CREA. REALTOR®. Member of CREA and more.

Listing information last updated on October 14th, 2025 at 11:16am PDT