

\$940,000 - 4012 Highway 16, Rural Parkland County

MLS® #E4417595

\$940,000

3 Bedroom, 3.00 Bathroom, 1,515 sqft

Single Family on 142.41 Acres

None, Rural Parkland County, Alberta

142 Acres- Large 3 level split home with 3 Bedrooms, Large living room, Family room, Laundry Room, Newer Windows, Furnace and Hot Water Tank, double car garage (27X22) 220 wiring, Heated and more. 1 Shop- 48 X 40 other Shop 78 X 61. Pond on property has been stocked in previous years. Wabamun Provincial Park right across the highway. Easy Access to Highway. Great Land with lots of Recreational potential for outdoor activity. The Pond allows for a great place to picnic or set up a great campfire. (id:6289)

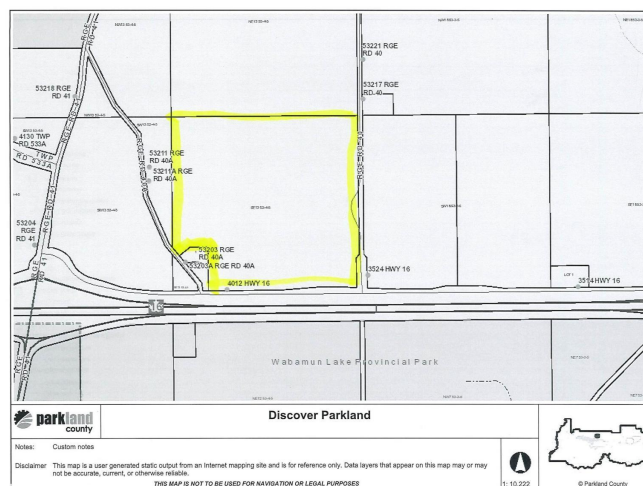
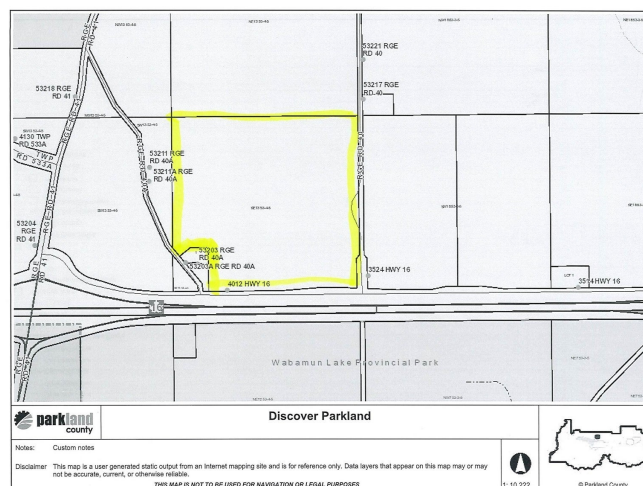
Built in 1979

Essential Information

Listing #	E4417595
Price	\$940,000
Bedrooms	3
Bathrooms	3.00
Half Baths	1
Square Footage	1,515
Acres	142.41
Year Built	1979
Type	Single Family

Community Information

Address	4012 Highway 16
Subdivision	None
City	Rural Parkland County
Province	Alberta



Postal Code T0E2K0

Amenities

Amenities Schools, Shopping

Features Treed, See remarks, Flat site, Subdividable lot, No Smoking Home, Recreational, Agriculture

Parking Attached Garage

of Garages 1

Interior

Appliances Dishwasher, Refrigerator, Stove, Central Vacuum, Window Coverings

Heating Forced air

Listing Details

Listing Office RE/MAX Real Estate



The trademarks MLS®, Multiple Listing Service® and the associated logos are owned by The Canadian Real Estate Association (CREA) and identify the quality of services provided by real estate professionals who are members of CREA. REALTOR®. Member of CREA and more.

Listing information last updated on October 15th, 2025 at 2:16pm PDT