

\$900,000 - Rge Rd 243 Twp Rd 461, Rural Wetaskiwin County

MLS® #E4384852

\$900,000

0 Bedroom, 0.00 Bathroom,
Vacant Land on 69.70 Acres

None, Rural Wetaskiwin County, Alberta

69.7 Acres of Bare Industrial Land. Boarding the City of Wetaskiwin, Zoned Industrial, Located in the County of Wetaskiwin with possibilities to connect to City services with proper protocols to complete. Level land. Restrictive covenant for some purposes and uses that are not permitted. (id:6289)

Built in 1851

Essential Information

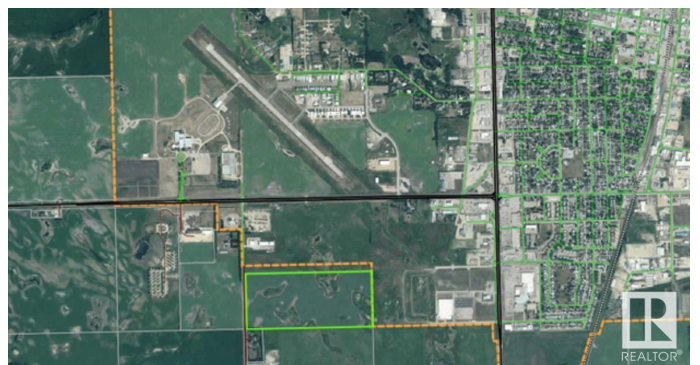
Listing #	E4384852
Price	\$900,000
Bathrooms	0.00
Acres	69.70
Year Built	1851
Type	Vacant Land

Community Information

Address	Rge Rd 243 Twp Rd 461
Subdivision	None
City	Rural Wetaskiwin County
Province	Alberta
Postal Code	T9A1X1

Listing Details

Listing Office	RE/MAX Real Estate
----------------	--------------------



The trademarks MLS®, Multiple Listing Service® and the associated logos are owned by The Canadian Real Estate Association (CREA) and identify the quality of services provided by real estate professionals who are members of CREA. REALTOR®. Member of CREA and more.

Listing information last updated on October 14th, 2025 at 11:46pm PDT